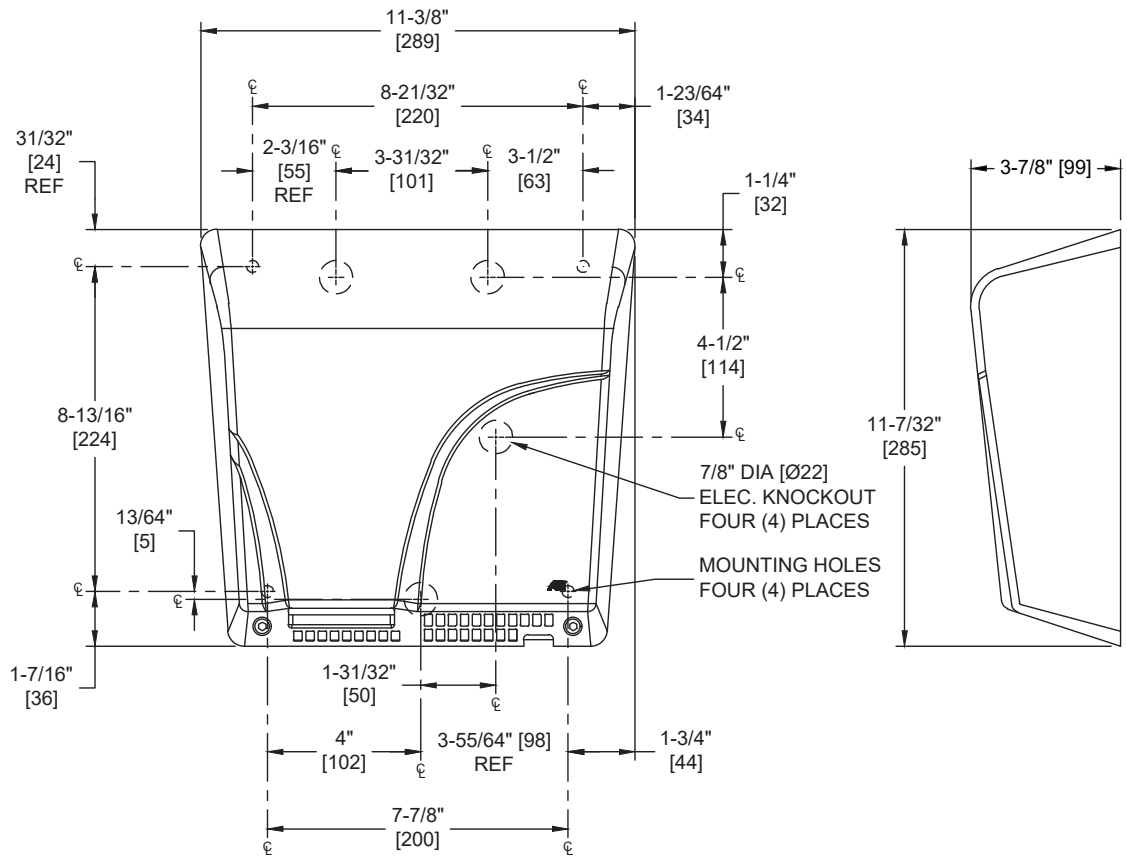


Profile™ Compact Dryer – Surface Mounted – White

Hand Dryers

Profile-Dryer

MasterFormat Section 10 28 13



NOTE:
ALL DIM'S INCH [MM]
ILLUSTRATION FOR REF ONLY AND NTS
FOR CLEANING INSTRUCTIONS SEE APPROPRIATE SECTIONS IN
PRODUCT CARE & MAINTENANCE BULLETIN (PCM) ON ASI WEBSITE

Scan for Information



SUSTAINABILITY/LEED

PRODUCT OVERVIEW

Operates automatically from IR sensor that activates dryer when hands are placed in sensor zone. Motor and heating element have internal resetting automatic thermal protection.

KEY FEATURES & SPECIFICATIONS

- ADA Compliant <4" Depth
- 66 dB-A
- Heavy Duty Cast Iron with White Porcelain Enamel
- Surface Mounted - "Touch Free" Operation
- Automatic - AC - Universal Voltage - "No Touch"

OPERATION & MAINTENANCE

Automatic "No-Touch"
Dryer is activated by user placing hands under sensor. LED in sensor array shines blue light during operation to guide user to optimal hand placement for shorter drying time. Dryer automatically shuts off after time-out when user removes hands from sensor zone.

TECHNICAL INFORMATION / PRODUCT PROPERTIES

Property	Value							
Dimensions	11-3/8" x 11-7/32" x 3-7/8" [289 x 285 x 99]							
Construction	Heavy Duty Cast Iron with White Porcelain Enamel							
Mounting	Surface Mounted - "Touch Free" Operation							
Electrical	Universal Voltage							
Motor	HP	RPM (x1000)	Fan Type	Airflow	Heating Element	Air Output Temperature	Sound Pressure	Drying Time
Brush Type Dual Ball Bearings	0.25	75	Single-Inlet Centrifugal	180 CFM (306 m3/h)	Nichrome wire with auto reset circuit breaker	140° F (60° C) @ 77°F (25° C) Ambient room temperature	66 dB-A @ 2M	Less Than 15 Seconds

INSTALLATION

Unit is surface mounted on wall with four (4) 1/4" [6] screws, washers and bushings (supplied) through rubber grommets (supplied) in a corrosion protected formed heavy steel back plate. For masonry walls use expansion bolts or anchors for 1/4" [6] screws. Electrical service is supplied and connected (by others) prior to installing cover. Cover is secured to back plate with two (2) hex socket security screws (supplied). For compliance with ICC/ANSI A-117.1-2003 and 2010 ADA Accessibility Standards install unit with bottom of sensor lens 48" [1219] maximum Above Finished Floor (AFF) if clear floor forward reach or if clear floor side reach access is provided or 46" [1168] max AFF if side reach access over an obstruction (e.g. vanity) with reach depth greater than 10" [254] and less than 25" [635] is only provided or 44" [1118] max AFF if forward reach over an obstruction (e.g. commode) with reach depth greater than 20" [508] and less than 25" [635] is only provided. For general utility, install unit so that bottom edge of dryer is 45" [1143] to 50" [1270] AFF. For two or more dryers, dryers should be no closer than 24" [610] on center.

OPTIONS

Voltage
110-240 VAC - 50/60 Hz - 15 A (Max.) - 1800W

WARRANTY

Ten (10) Years from date of Invoice