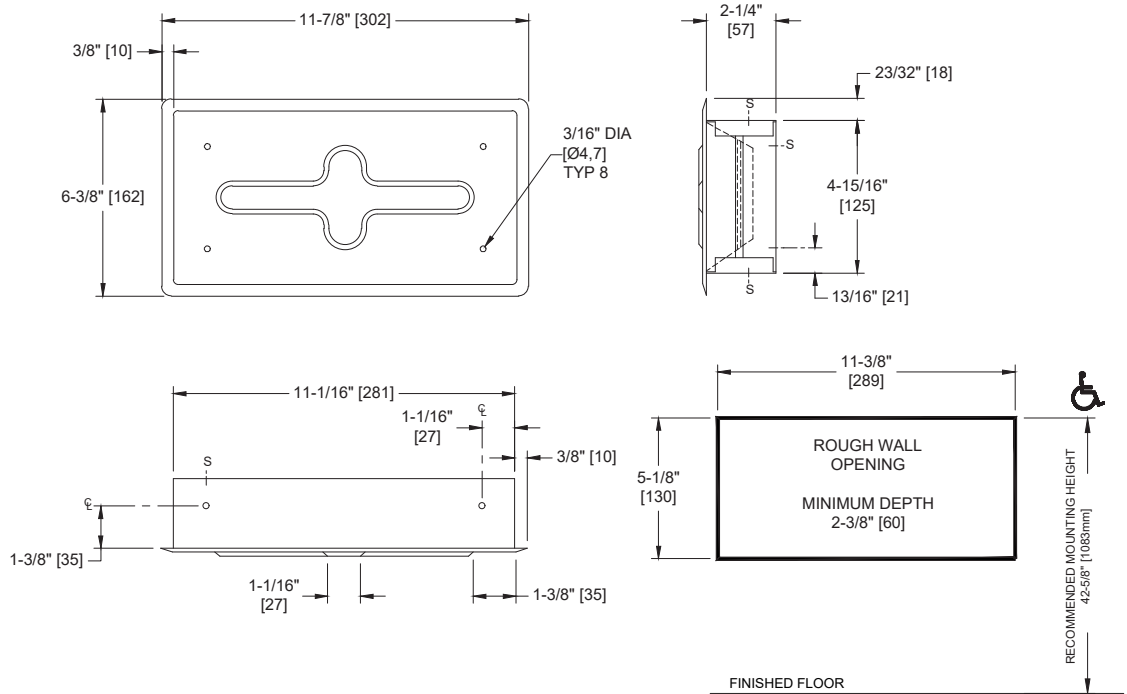


Facial Tissue Dispenser, Satin Finish – Recessed

Specialty Accessories

MasterFormat Section 10 28 13



Scan for Information



SUSTAINABILITY/LEED

MR 4.1 (1) MR 6 (1) EQ 4.2 (1)
MR 4.2 (1) EQ 4.1 (1) EQ 4.4 (1)

NOTE:
ALL DIM'S INCH [MM]
ILLUSTRATION FOR REF ONLY AND NTS

PRODUCT OVERVIEW

Dispenses 300 single-ply or 150 double-ply tissue. Face-plate of 22 gauge alloy 18-8 type 304 stainless steel satin finish. Cover shall be held closed by hooks located on each side and shall correspond to clips located on side walls of dispenser body.

KEY FEATURES & SPECIFICATIONS

- Smooth Dispensing slot
- Type 304 Stainless Steel - Satin Finish
- Recessed
- 300 single-ply or 150 double-ply Tissue Capacity

OPERATION & MAINTENANCE

Tissues are manually retrieved through the tissue dispensing slot. To refill the dispenser, remove the cover by disengaging the hooks from the side wall clips and reload with fresh supply box. Fit the first sheet through the slot to start, then replace the cover. Supply is replenished on a cycle determined by maintenance needs.

TECHNICAL INFORMATION / PRODUCT PROPERTIES

Property	Value
Dimensions	11-11/16" [300] x 6-3/8" [160]
Construction	Type 304 Stainless Steel - Satin Finish
Mounting	Recessed
Capacity	300 single-ply or 150 double-ply Tissue Capacity

INSTALLATION

For general utility mount dispenser 48" [1219] to 60" [1524] Above Finished Floor (AFF) from top of dispenser. Secure dispenser with screws (by others) through mounting holes in rear of cabinet. For compliance with 2010 ADA Accessibility Standards, install unit so that tissue dispensing slot is 54" [1372] maximum AFF if clear floor side reach access is provided or 48" [1219] maximum Above Finished Floor (AFF) if clear floor forward reach access is only provided or 46" [1168] maximum AFF if side reach over obstruction (i.e. vanity) is only provided.
 Rough Wall Opening (RWO) required is 11-3/8" [289] W x 5-1/8" [130] H x 2-1/8" [54] D minimum

ADDITIONAL INFORMATION

N/A

WARRANTY

One (1) Year from date of Invoice