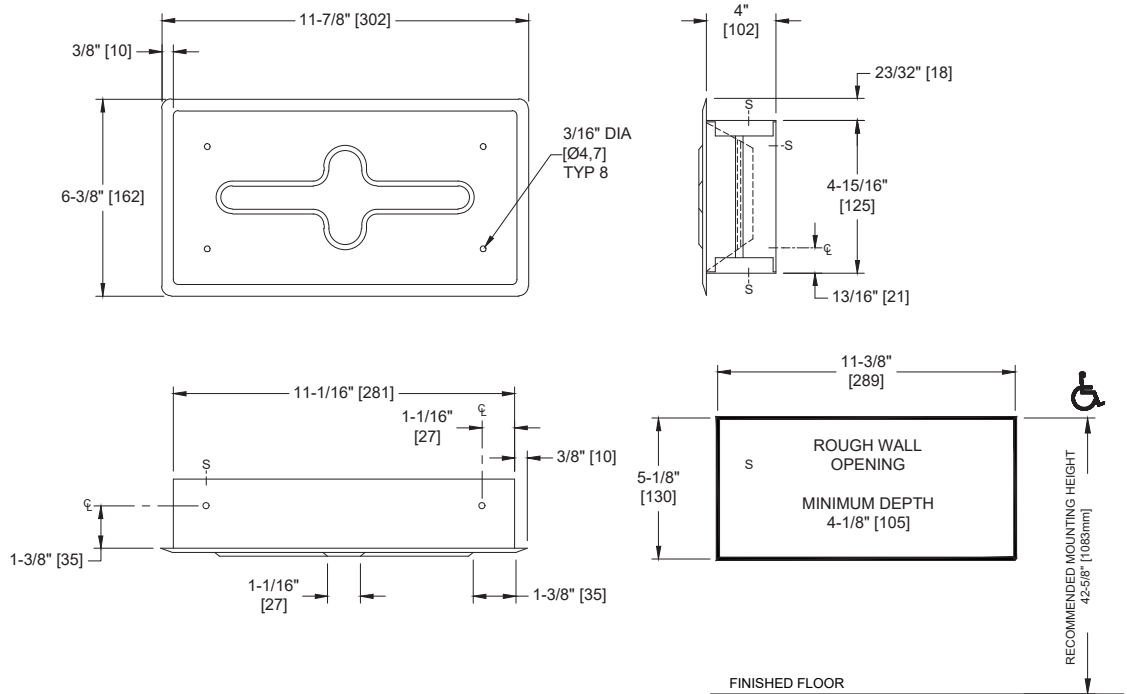
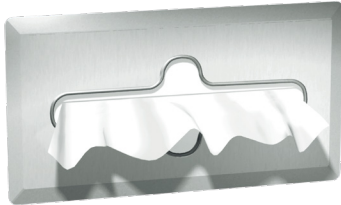


Facial Tissue Dispenser, Bright Polished – Recessed

Specialty Accessories

MasterFormat Section 10 28 13



Scan for Information



SUSTAINABILITY/LEED

MR 4.1 (1) MR 6 (1) EQ 4.2 (1)
MR 4.2 (1) EQ 4.1 (1) EQ 4.4 (1)

NOTE:
ALL DIM'S INCH [MM]
ILLUSTRATION FOR REF ONLY AND NTS

PRODUCT OVERVIEW

Capacity is 600 single sheet or 300 two ply sheets. Face-plate is bright polished stainless steel. Tissues are manually retrieved through the tissue dispensing slot. Cover shall be fabricated of alloy 18-8 stainless steel, type 304, 22 gauge with bright finish. Cabinet shall have mounting holes located all around.

KEY FEATURES & SPECIFICATIONS

- Smooth Dispensing slot
- Type 304 Stainless Steel- Polished Bright Finish
- Recessed
- 600 single-ply or 300 double-ply Tissue Capacity

OPERATION & MAINTENANCE

Tissues are manually retrieved through the tissue dispensing slot. To refill the dispenser, remove the cover by disengaging the hooks from the side wall clips and reload with fresh supply box. Fit the first sheet through the slot to start, then replace the cover. Supply is replenished on a cycle determined by maintenance needs.

TECHNICAL INFORMATION / PRODUCT PROPERTIES

Property	Value
Dimensions	11-7/8" [302] W x 6-3/8" [162] H x 4" [102] D
Construction	Type 304 Stainless Steel- Polished Bright Finish
Mounting	Recessed
Capacity	600 single-ply or 300 double-ply Tissue Capacity

INSTALLATION

For general utility mount dispenser 48" [1219] to 60" [1524] Above Finished Floor (AFF) from top of dispenser. Secure dispenser with screws (by others) through mounting holes in rear of cabinet. For compliance with 2010 ADA Accessibility Standards, install unit so that centerline of tissue dispensing slot is 48" [1219] maximum Above Finished Floor. Rough Wall Opening (RWO) required is 11-3/8" [289] W x 5-1/8" [130] H x 4-1/8" [105] D minimum

ADDITIONAL INFORMATION

N/A

WARRANTY

One (1) Year from date of Invoice