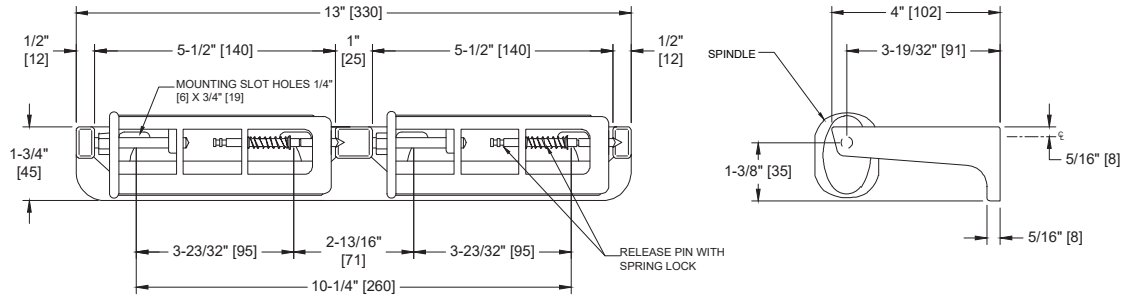


Double Toilet Tissue Holder – Surface Mounted, Controlled Delivery

Toilet Tissue Dispensers

MasterFormat Section 10 28 13



Scan for Information



SUSTAINABILITY/LEED

MR 4.1 (1) MR 6 (1) EQ 4.2 (1)
MR 4.2 (1) EQ 4.1 (1) EQ 4.4 (1)

NOTE:
ALL DIM'S INCH [MM]
ILLUSTRATION FOR REF ONLY AND NTS

PRODUCT OVERVIEW

Heavy-duty cast aluminum, satin matte silver-gray finish. No waste rocking action spindles of cyclac ABS thermoplastic. Holds 2 rolls up to 6" diameter [Ø152] (2000 sheets).

KEY FEATURES & SPECIFICATIONS

- Double Roll Dispenser
- Controlled Delivery Spindle
- Aluminum Casting with Satin-Matte, Silver-Grey Finish
- Surface Mounted

OPERATION & MAINTENANCE

Spindles revolve 1/2 revolution for each operation and then return to their original position. Roll core prevents access to release pin and cannot be removed from spindle until exhausted. Unit is replenished by releasing a concealed pin which in turn releases a spring lock mechanism on spindle. Spindles operate independently.

TECHNICAL INFORMATION / PRODUCT PROPERTIES

Property	Value
Dimensions	13" [330] W x 1-3/4" [45] H x 4-3/4" [120] D
Construction	Aluminum Casting with Satin-Matte, Silver-Grey Finish
Mounting	Surface Mounted
Capacity	Holds two (2) rolls of standard core roll toilet paper up to 6" Dia. [Ø152]

INSTALLATION

Unit is surface mounted on wall or partition using #10 self-threading screws (by others). For compliance with 2010 ADA Accessibility Standards, unit should be installed so that tissue roll centerline is between 44" [1118] maximum above finished floor (AFF) and 19" [483] minimum AFF.

OPTIONS**WARRANTY**

One (1) Year from date of Invoice