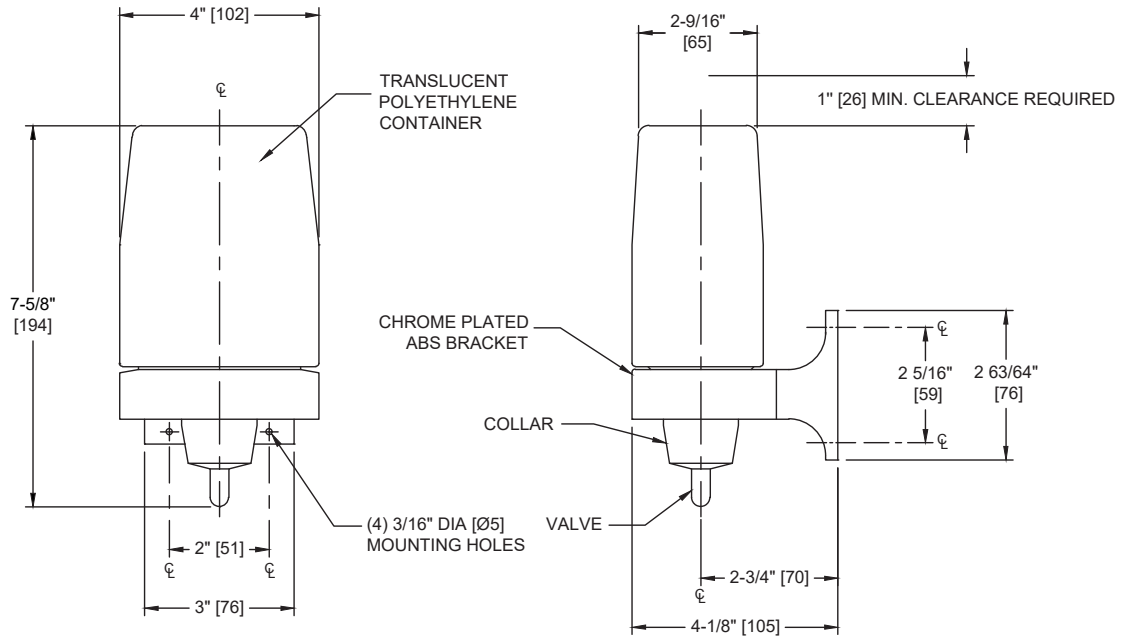


**Soap Dispenser (Liquid, Push-up type) 24 oz. – Surface Mounted**

Soap Dispensers

MasterFormat Section 10 28 13



Scan for Information



**SUSTAINABILITY/LEED**

**NOTE:**  
ALL DIM'S INCH [MM]  
ILLUSTRATION FOR REF ONLY AND NTS  
SEE SOAP DISPENSER CARE & MAINTENANCE  
DOCUMENT ONLINE FOR CLEANING

**PRODUCT OVERVIEW**

Chrome plated ABS mounting bracket with translucent polyethylene soap container. Corrosion resistant ABS valve with stainless steel spring dispenses soaps, detergents or thin lotions. Capacity of 24 oz (0.71 L). Soap Requirements: Proper usage of this dispenser requires, that only soap within the following range for viscosity and pH may be used. Viscosity Range (mPa\*s or cP): 150 – 3000. pH Range: 5.0 ~ 9.0

**KEY FEATURES & SPECIFICATIONS**

- Corrosion resistant ABS valve with stainless steel spring
- Chrome plated ABS mounting bracket with translucent polyethylene soap container
- Surface Mounted
- Manual Push-Up Dispenser
- Liquid Soap - 24 oz. (0.71 L) Capacity

**OPERATION & MAINTENANCE**

A measured amount of soap is manually dispensed by pushing-up against valve. Unit can be reloaded by unscrewing collar at base and removing soap container. Soap will continue to feed properly until empty. Tank supply is replenished manually on cycle determined by maintenance needs.

**TECHNICAL INFORMATION / PRODUCT PROPERTIES**

Property	Value
Dimensions	4" x 7-5/8" x 4-1/8" [102 x 194 x 105]
Construction	Chrome Plated ABS with translucent polyethylene soap container
Mounting	Surface Mounted
Options	N/A

**INSTALLATION**

Secure unit bracket to wall or partition using four (4) #10 pan head self-threading screws (supplied). Container is secured to bracket with a threaded collar. For compliance with 2010 ADA Accessibility Standards install unit so that bottom of unit is 48" [1219] maximum Above Finished Floor (AFF). For general utility install unit 42" [1066] AFF or 8" [203] minimum above counter top.

**WARRANTY**

One (1) Year from date of invoice