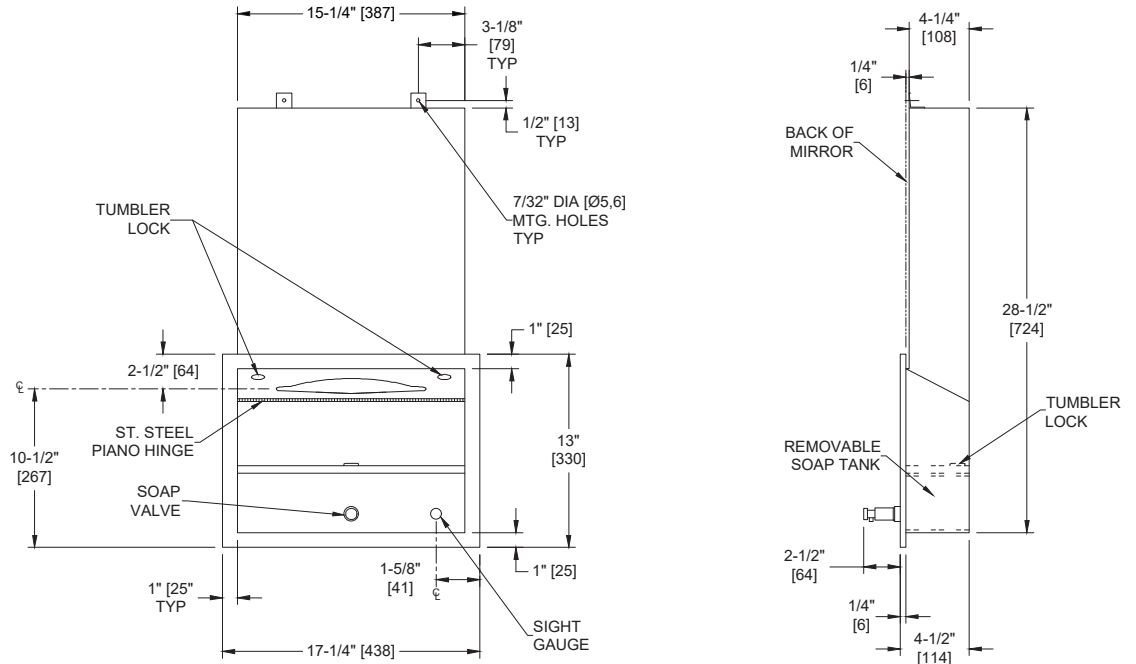


All Purpose Cabinet (Concealed Body for mounting behind mirrors) – Shelves, Towel, Soap Dispenser – Recessed

Cabinets

Traditional

MasterFormat Section 10 28 13



Scan for Information



SUSTAINABILITY/LEED

MR 4.1 (1) MR 6 (1) EQ 4.2 (1)
MR 4.2 (1) EQ 4.1 (1) EQ 4.4 (1)

NOTE:
ALL DIM'S INCH [MM]
ILLUSTRATION FOR REF ONLY AND NTS

PRODUCT OVERVIEW

For mounting behind continuous mirror. Shelf, Towel Dispenser and Soap Dispenser holds 800 standard multi-fold or 600 standard C-fold paper towels and dispense 101 ounces (3 liters) of and dispense 101 ounces (3 liters) of liquid and lotion soaps, synthetic detergents and antibacterial soaps. Soap Requirements: Proper usage of this dispenser requires, that only soap within the following range for viscosity and pH may be used. Viscosity Range (mPa·s or cP): 100 – 2500. pH Range: 6.5 ± 1.5. Cabinet, door, dispenser tank and frame shall be fabricated of 22 gauge alloy 18-8 type 304 stainless steel.

KEY FEATURES & SPECIFICATIONS

- Concealed Body for mounting behind mirrors
- Towel slot has a fully hemmed edge for snag-free dispensing and user safety
- Type 304 Stainless Steel - Satin Finish
- Recessed
- 600 C-fold OR 800 multi-fold paper towels

OPERATION & MAINTENANCE

Soap is manually dispensed by pushing valve button until supply is depleted. Towels are self-feeding until supply is depleted. Unit may be reloaded easily by opening door or tank assembly with a partial load in-place and will continue to feed properly. Tank supply is replenished manually on cycle determined by maintenance needs.

TECHNICAL INFORMATION / PRODUCT PROPERTIES

Property	Value
Dimensions	17-1/4" [430] W x 30-1/2" [775] H x 4-1/4" [108] D
Construction	Type 304 Stainless Steel - Satin Finish
Mounting	Recessed
Capacity	600 C-Fold OR 800 Multi-Fold / '101 oz. (3.0 L) Soap Capacity

INSTALLATION

Unit is recessed mounted in wall using #10 self-threading screws (by others) through concealed mounting holes provided. For compliance with 2010 ADA Accessibility Standards, unit should be installed so that towel dispenser slot is 48" [1219] maximum above finished floor (AFF). Note that bottom of RWO is 3/4" [19] above bottom of unit. If unit is to be installed behind mirror, height is governed by location of bottom edge of reflecting surface. Rough Wall Opening (RWO) required is 15-3/4" [400] W x 29-1/2" [749] H x 4-1/4" [108] D minimum.

Please note: because unit works in conjunction with the installation of a mirror, make sure that cabinet aligns with finished wall. If mirror has hanging bracket (ie: model No 0600) take care not to attach into cabinet body.

WARRANTY

One (1) Year from date of Invoice