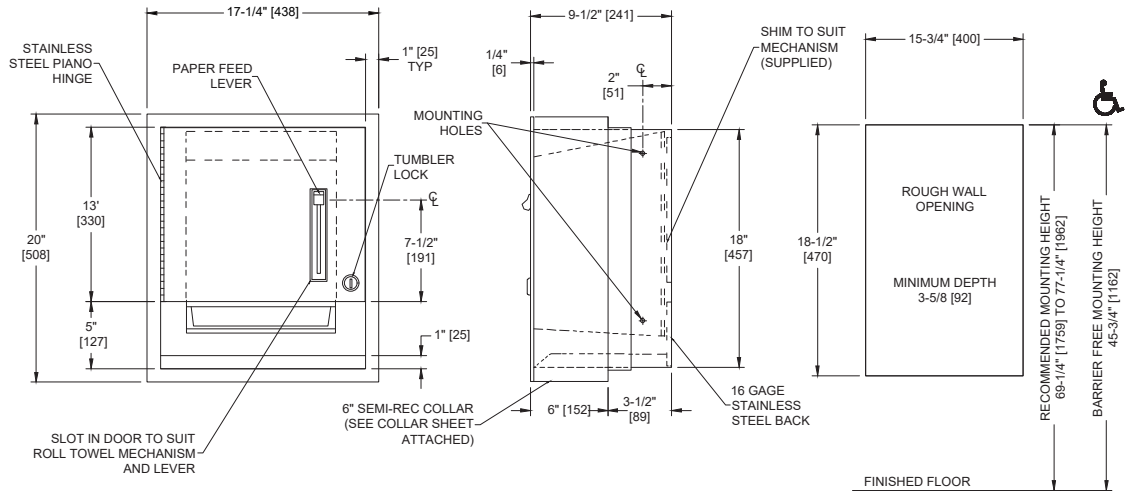


Roll Paper Towel Dispenser – Semi-Recessed

Paper Towel Dispensers

Traditional

MasterFormat Section 10 28 13



Scan for Information



SUSTAINABILITY/LEED

MR 4.1 (1) MR 6 (1) EQ 4.2 (1)
MR 4.2 (1) EQ 4.1 (1) EQ 4.4 (1)

NOTE:
ALL DIM'S INCH [MM]
ILLUSTRATION FOR REF ONLY AND NTS
FOR CLEANING INSTRUCTIONS SEE APPROPRIATE SECTIONS IN
PRODUCT CARE & MAINTENANCE BULLETIN (PCM) ON ASI WEBSITE

PRODUCT OVERVIEW

Unit holds and dispenses one 8" [203] or 9" [229] wide standard towel roll up to 800 ft. (244m) long and one stub roll up to 4" diameter [Ø102]. Unit allows settings for towel dispense length of 2-1/2" [64], 4" [102] or 5" [127] with no adapter plates. Locking door prevents unauthorized access or removal. Semi-Recessed with stainless steel collar.

KEY FEATURES & SPECIFICATIONS

- Adjustable dispensing settings
- Type 304 Stainless Steel - Satin Finish
- Semi-Recessed - w/ 6" collar
- Pull Type
- Roll Towels - up to 800 ft. Length

OPERATION & MAINTENANCE

Towels are fed by lever action until supply is depleted. Unit may be reloaded with a full roll to automatically start when finished with an existing partial (stub) roll. Preset length of towel dispensed may be adjusted for 2-1/2", 4", or 5" (64mm, 102mm, or 127mm) long increments. Locking door prevents unauthorized access or removal.

TECHNICAL INFORMATION / PRODUCT PROPERTIES

Property	Value
Dimensions	17-1/4" [438] W x 20" [508] H x 9-3/4" [248] D
Construction	Type 304 Stainless Steel - Satin Finish
Power	N/A
Operation	Manual - Pull Type
Mounting	Semi-Recessed with 6" collar
Capacity	Roll Towels - up to 800 ft. Length

INSTALLATION

Mount unit in wall recess using #10 self-threading screws (by others) through concealed mounting holes provided. Note that top of rough wall opening is 3/4" [19] below top of unit.

Rough Wall Opening (RWO) required is 15-3/4" [400] W x 18-1/2" [470] H x 3-1/2" [89] D minimum

WARRANTY

One (1) Year from date of Invoice