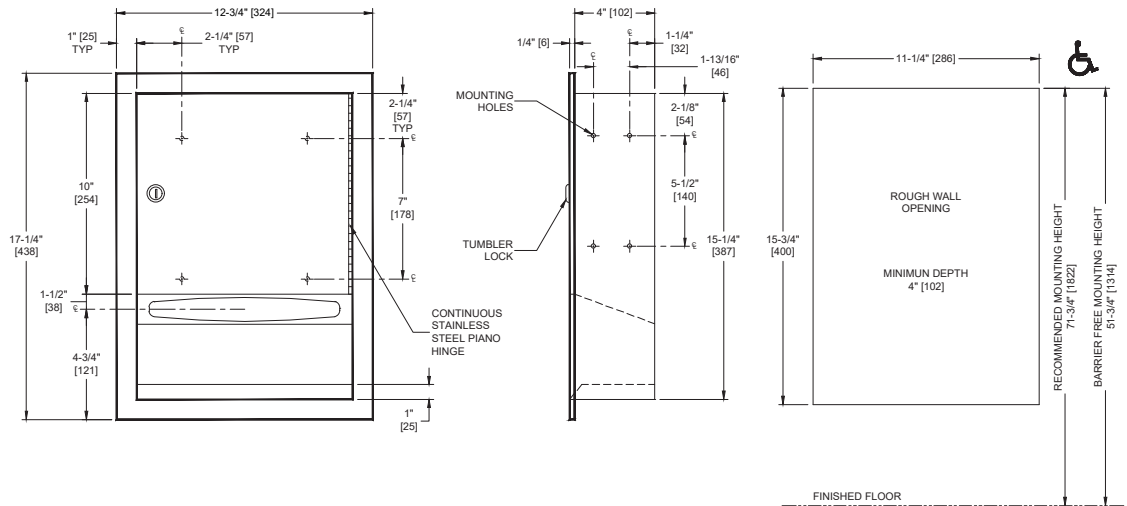


Paper Towel Dispenser (Multi - C-Fold) – Recessed

Paper Towel Dispensers

Traditional

MasterFormat Section 10 28 13



Scan for Information



SUSTAINABILITY/LEED

MR 4.1 (1) MR 6 (1) EQ 4.2 (1)
MR 4.2 (1) EQ 4.1 (1) EQ 4.4 (1)

NOTE:
ALL DIM'S INCH [MM]
ILLUSTRATION FOR REF ONLY AND NTS
FOR CLEANING INSTRUCTIONS SEE APPROPRIATE SECTIONS IN
PRODUCT CARE & MAINTENANCE BULLETIN (PCM) ON ASI WEBSITE

PRODUCT OVERVIEW

Dispenses 350 C-fold or 500 multi-fold paper towels. Well-suited for smaller washrooms with less space and traffic. Towels are self-feeding until supply is depleted. Unit may be reloaded with a partial load in-place and will continue to feed properly.

KEY FEATURES & SPECIFICATIONS

- Compact size for smaller spaces
- Towel slot has a fully hemmed edge for snag-free dispensing and user safety
- Type 304 Stainless Steel - Satin Finish
- Recessed
- Pull Type
- 350 C-Fold OR 475 Multi-Fold

OPERATION & MAINTENANCE

Towels are self-feeding until supply is depleted. Towels are refilled from the bottom via two push-up flaps.

TECHNICAL INFORMATION / PRODUCT PROPERTIES

Property	Value
Dimensions	12-3/4" [324] W x 17-1/4" [438] H x 4-1/4" [108] D
Construction	Type 304 Stainless Steel - Satin Finish
Power	N/A
Operation	Manual - Pull Type
Mounting	Recessed
Capacity	350 C-Fold OR 475 Multi-Fold

INSTALLATION

Unit is recessed mounted in wall using #10 screws (by others) through concealed mounting holes provided. For compliance with 2010 ADA Accessibility Standards install unit so that centerline of towel dispenser slot is 48" [1219] maximum above finished floor (AFF). To comply with CalDAG mounting height, towel dispenser slot should be 40" [1016] AFF. Note that bottom of RWO is 3/4" [19] above bottom of unit.

Rough Wall Opening (RWO) required is 11-1/4" [286] W x 15-3/4" [400] H x 4" [102] D minimum

WARRANTY

One (1) Year from date of Invoice