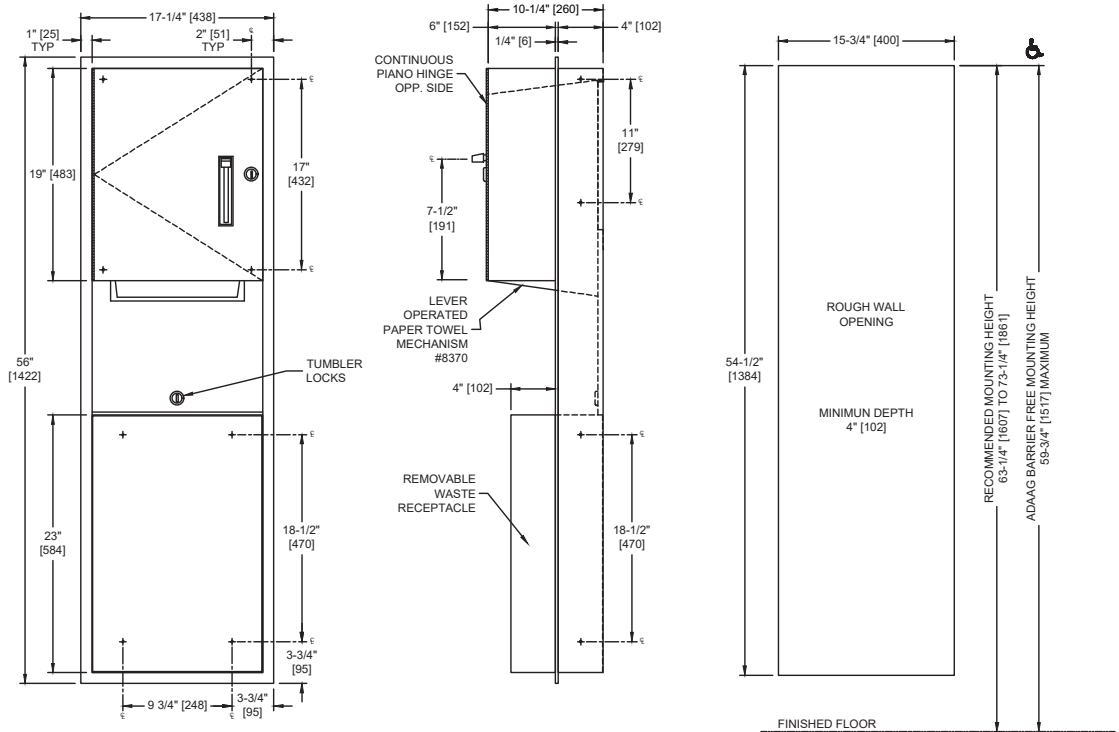


**Roll Paper Towel Dispenser & Waste Receptacle – Recessed - 12 gal.**

Paper Towel Combination Units

Traditional

MasterFormat Section 10 28 13



**NOTE:**  
ALL DIM'S INCH [MM]  
ILLUSTRATION FOR REF ONLY AND NTS  
FOR CLEANING INSTRUCTIONS SEE APPROPRIATE SECTIONS IN  
PRODUCT CARE & MAINTENANCE BULLETIN (PCM) ON ASI WEBSITE

Scan for Information



**SUSTAINABILITY/LEED**

MR 4.1 (1) EQ 4.1 (1)  
MR 4.2 (1) EQ 4.2 (1)  
MR 6 (1) EQ 4.4 (1)

**PRODUCT OVERVIEW**

Unit mechanically dispenses 8" [205] or 9" [230] wide standard towel roll up to 800 ft. (244m) long and has stub roll capability for continuous dispensing. 12 gal. (45.4 liters) disposal capacity. A lever operated dispensing mechanism also supplied.

**KEY FEATURES & SPECIFICATIONS**

- Double-pan construction door has "no-Flex" fiberboard filler for added rigidity and strength
- Door is attached to the cabinet with a 3/16" diameter [Ø5] Heavy-duty, Multi-Stacked Stainless Steel Piano Hinge
- Type 304 Stainless Steel - Satin Finish
- Recessed
- RollTowels - up to 800 ft. Length / 12.0 Gal. (46.0 L) Waste Capacity

**OPERATION & MAINTENANCE**

Towels are fed by lever action until supply is depleted. Towel feed length is adjustable for economy by pin (supplied) limiting of lever stroke length. Unit may be reloaded with a full roll to automatically start when finished with an existing partial roll. Waste container is emptied manually on cycle determined by maintenance needs. Locking compartment and receptacle retainer prevents unauthorized access and removal.

**TECHNICAL INFORMATION / PRODUCT PROPERTIES**

Property	Value
Dimensions	17-1/4" [438] W x 56" [1422] H x 10-1/4" [260] D
Construction	Type 304 Stainless Steel - Satin Finish
Mounting	Recessed
Capacity	Roll Towels - up to 800 ft. Length / 12.0 Gal. (46.0 L) Waste Capacity

**INSTALLATION**

Install unit in wall recess using #10 self-threading screws (by others) through concealed mounting holes provided. Note that top of Rough Wall Opening (RWO) is 3/4" [19] below top of unit. For compliance with 2010 ADA Accessibility Standards, install unit so that towel dispenser lever is 48" [1219] maximum Above Finish Floor (AFF).

Rough Wall Opening (RWO) required is 15-3/4 [400] W x 54-1/2" [1384] H x 4" [102] D minimum

**WARRANTY**

One (1) Year from date of Invoice