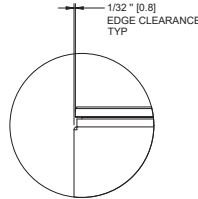
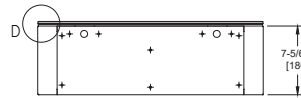
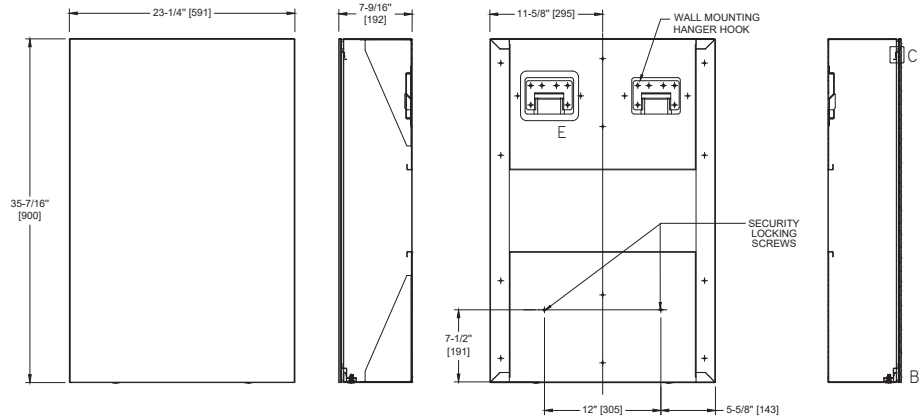


Velare™ BTM System – 23" wide Filler Cabinet

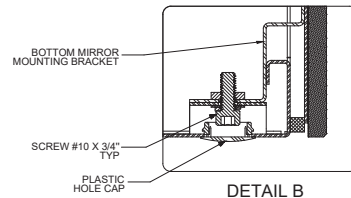
Mirrors

Velare

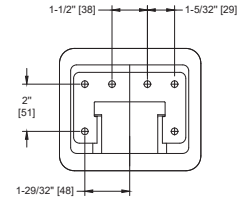
MasterFormat Section 10 28 13



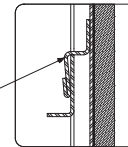
DETAIL D



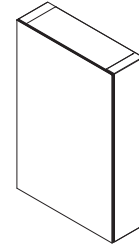
DETAIL B



DETAIL E



DETAIL C



Scan for Information



SUSTAINABILITY/LEED

MR 4.1 (1) MR 6 (1) EQ 4.2 (1)
MR 4.2 (1) EQ 4.1 (1) EQ 4.4 (1)

NOTE:
ALL DIM'S INCH [MM]
ILLUSTRATION FOR REF ONLY AND NTS
FOR CLEANING INSTRUCTIONS SEE APPROPRIATE SECTIONS IN
PRODUCT CARE & MAINTENANCE BULLETIN (PCM) ON ASI WEBSITE

PRODUCT OVERVIEW

ASI's Velare™ Behind the Mirror (BTM) wall mounted type 304, alloy 18-8 stainless steel cabinet filler module provides spacing between other Velare™ BTM modules where needed. Mirror is made from 1/4" [6] thick frameless tempered glass conforming to ASTM C-1048 with pencil edges and eased corners with SS sheet intermediate stiffener and SS back plate with integral welded support mounts.

KEY FEATURES & SPECIFICATIONS

- Filler Cabinet designed for a more continuous look
- Fits adjacent to or between standard Velare™ cabinets
- Cabinet body is made of Type 304, alloy 18-8 stainless steel
- 1/4" [6] thick tempered glass mirror has a pencil edge with a radius for safety and elegance
- Surface Mounted
- 23-1/4" [591] Wide

TECHNICAL INFORMATION / PRODUCT PROPERTIES

| Property | Value |
|--------------|---|
| Dimensions | 23-1/4" [357] W x 35-7/16" [900] H x 7-9/16" [192] D |
| Construction | Type 304, alloy 18-8 stainless steel - Satin Finish 1/4" [6.4] thick tempered glass mirror has a pencil edge with a radius for safety and elegance |
| Mounting | Surface Mounted |
| Materials | <u>Cabinet:</u> 14, 16, 18, 20 and 22 gauge type 304, alloy 18-8 stainless steel. <u>Glass:</u> Tempered glass. |

INSTALLATION

Mount cabinet on wall using twelve (12) #12 self-threading pan-head screws (by others) through two (2) concealed mounting plate into appropriate anchoring and wall reinforcement and hang unit on hooks on mounting plate. Install two (2) #12 self-threading locking screws (by others) into appropriate anchoring to prevent unit from being lifted off hanger hooks. Position mirror in front of cabinet and insert top and bottom rear tabs into receiver-slots. Secure mirror with two (2) #10-32x3/4" Pan Head screws (provided) to the bottom mirror mounting brackets through the bottom access holes by engaging and securing to threaded inserts provided on bottom mirror rear mounting tabs. Cover the screw access holes using the two (2) black plastic hole caps (supplied). Suggested mounting height is to position bottom of module 16" to 20" [508] above vanity top so bottom aligns with ASI models 0661-X or 0663-X on either side of Filler Module. See complete IG before starting installation.

SIZE OPTIONS
GLAZING OPTIONS

Not Available

WARRANTY

One (1) Year from date of Invoice