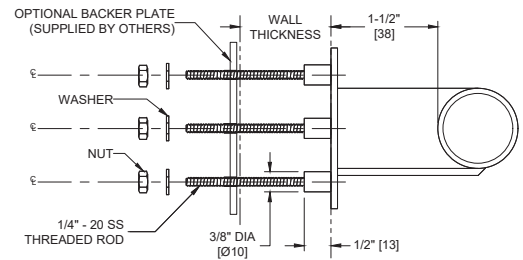
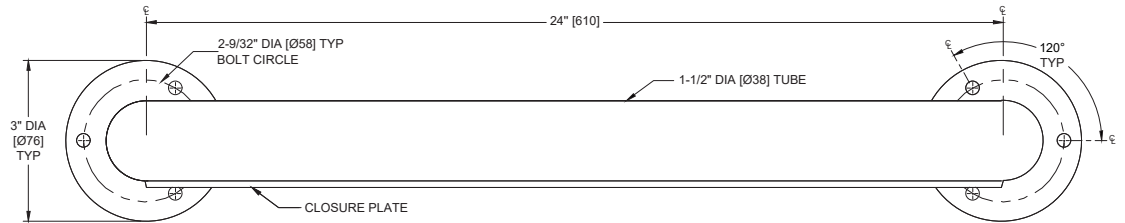


**Grab Bar with closure plate. Chase Mounted 24" [610] Length**

Security Accessories

MasterFormat Section 10 28 13



Scan for Information



**SUSTAINABILITY/LEED**

MR 4.1 (1) MR 6 (1) EQ 4.2 (1)  
MR 4.2 (1) EQ 4.1 (1) EQ 4.4 (1)

**NOTE:**  
ALL DIM'S INCH [MM]  
ILLUSTRATION FOR REF ONLY AND NTS

**PRODUCT OVERVIEW**

Security Grab Bar shall type 304 stainless steel alloy 18-8. All exposed surfaces shall have satin finish. Tubing shall be 1-1/2" diameter [38 Dia.] with 18 gauge (0.048" [1.2] thick) wall. Flanges shall be 1/8" [3] thick and shall be completely welded to tube end. Each flange shall have three (3) mounting holes to accommodate 1/4" diameter [6 Dia.] screws (supplied by others). Closure plate welded on bottom shall be 12 gauge (0.105" [2.7] thick) type 304 stainless steel alloy 18-8 and shall fit closely to flanges and a straight line between rear face mounting surface of flanges.

**KEY FEATURES & SPECIFICATIONS**

- Anti-ligature grab bar has a 12 gauge closure plate welded to the bottom
- Closure plate has built in drainage system
- Type 304 Stainless Steel - Satin Finish
- 18 gauge tubing
- Chase (Rear) Mount
- 24" [610] Length

**OPERATION & MAINTENANCE**

Stainless Steel washroom accessory products require regular surface cleaning, much the same as stainless steel sinks, pots and pans and eating utensils. As long as a regular cleaning schedule is followed, the best method is cleaning with a soft clean rag moistened with a mild detergent, followed by a water-moistened clean rag and then a dry rag. For a "new" look, surfaces can be wiped with lemon oil applied by a soft polishing cloth to maintain sheen. Stainless Steel should be protected against muriatic acid and caustic or abrasive materials, and harsh cleaning detergents [with pH outside the range 7 ± 1.5]. In the event such agents cause discoloration, polishing with a stainless steel cleaner such as 3M™ Stainless Steel Cleaner & Polish® and a soft cloth on bright or mirror finishes, or for satin finish surfaces the Stainless Steel cleaner and 3M™ Scotch Brite® pad either blue (less aggressive) or green (more aggressive) is recommended.

**TECHNICAL INFORMATION / PRODUCT PROPERTIES**

Property	Value
Dimensions	24" [610] Length
Construction	Type 304 Stainless Steel - Satin Finish 18 gauge tubing
Mounting	Chase (Rear) Mount
Capacity	ASI grab bars are designed to meet and exceed 2010 ADA Accessibility Standards and ANSI A117.1 that fabricated product shall be of adequate strength to support a load in excess of 250 pounds (113.4 kg). Mounting to the wall is a critical part of the system to meet this requirement. The fastener system must be adequately sized to withstand the shear, tension or pullout, and torsion loads generated by the maximum loading.

**INSTALLATION**

For compliance with 2010 ADA Accessibility Standards install unit so that top of the grab bar is 33" [840] minimum Above Finished Floor (AFF) to 36" [915] maximum AFF. Surface mount unit to finished wall through six (6) pre-drilled openings (by others) and secure unit to wall with washers and nuts (supplied) or other continuous anchor/backer material (by others) to suit local codes and wall conditions. The length of the threaded rods is determined by the thickness of the wall on which the unit is mounted. Specify the thickness of the wall in the charted increments below (e.g. 163-68).

Threaded Rod Length Selection Determined By Wall Thickness:  
 Less than 6" [152] - Suffix "-LT6"  
 6" to 8" [152 to 203] - Suffix "-68"  
 Over 8" [203], Specify Thickness - Suffix "-GT8=XXX"

**WARRANTY**

One (1) Year from date of Invoice