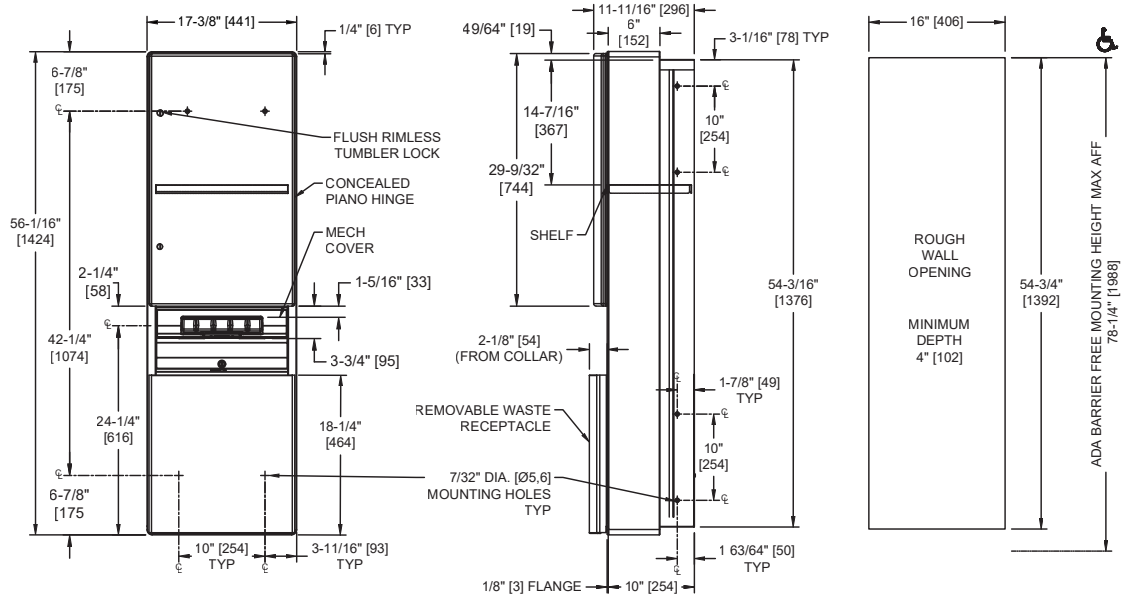


**Royal™ Semi-Recessed Automatic Roll Paper Towel Dispenser & Waste Receptacle**

Paper Towel Combination Units

Royal

MasterFormat Section 10 28 13



**SUSTAINABILITY/LEED**

MR 4.1 (1) MR 6 (1) EQ 4.2 (1)  
MR 4.2 (1) EQ 4.1 (1) EQ 4.4 (1)

**NOTE:**  
ALL DIM'S INCH [MM]  
ILLUSTRATION FOR REF ONLY AND NTS  
FOR CLEANING INSTRUCTIONS SEE APPROPRIATE SECTIONS IN  
PRODUCT CARE & MAINTENANCE BULLETIN (PCM) ON ASI WEBSITE

**PRODUCT OVERVIEW**

Proximity sensing no-touch unit dispenses a pre-set length per cycle from 8" [205] or 9" [230] wide standard towel roll up to 800 ft. (244m) long and has stub roll capability for continuous dispensing. Smaller waste receptacle, 13.5 gal. (51.1 L), allows unit to be ADA compliant. Internal shelf is ideal for paper towel storage. Towel length is determined by owner by setting length, delay and paper saver switches. Powered by 4 D-size batteries (not included). Semi-recessed with stainless steel collar.

**KEY FEATURES & SPECIFICATIONS**

- Curved front adds strength and elegance
- Concealed, Multi-Staked Piano Hinge with two (2) flush rimless tumbler locks keyed
- Cabinet & Frame made of 20 gauge Type 304 Stainless Steel - Satin Finish
- Removable Waste Can
- Semi-Recessed - w/ -6 collar
- Automatic - Battery Operated - "No Touch"
- RollTowels - up to 800 ft. [244M] Length / 13.5 Gal. (51.1 L) Waste Capacity

**OPERATION & MAINTENANCE**

Towels are dispensed one length at a time automatically when hands are placed in sensor zone until supply is depleted. Owner predetermines length of towel dispensed by making selections on three (3) three-position switches for length, delay, and economy. Unit may be reloaded with a full roll to automatically start when finished with an existing partial roll and will continue to feed properly when reloaded with a full roll and partial roll is transferred to stub roll position. Refill dispenser by unlocking door and replacing towel roll for an empty or partially empty unit. Dispenser supply is replenished, batteries are replaced and waste receptacle is emptied manually on cycles determined by maintenance needs. LED indicates sensing and battery condition. Locking compartment door and receptacle retainer prevents unauthorized access and roll removal.

**TECHNICAL INFORMATION / PRODUCT PROPERTIES**

Property	Value
Dimensions	17-5/8" [447] W x 56-5/16" [1430] H x 11-11/16" [297] D
Construction	Type 304 Stainless Steel - Satin Finish Concealed, Multi-Staked Piano Hinge
Power	Batteries: Four (4) D-size
Operation	Automatic "No-Touch"
Mounting	Semi-Recessed - w/ 6" collar
Capacity	Roll Towels - up to 800 ft. Length / 13.5 Gal. (51.1 L) Waste Capacity

**INSTALLATION**

Provide adequate in-wall reinforcement (by others) in drywall construction to hold mounted unit in-service after wall is finished. Provide appropriate anchors (by others) to suit wall and field conditions for installation into walls other than new drywall. Mount unit in wall recess using #10 self-threading screws (by others) through concealed mounting holes provided. Note that top of RWO is 25/32" [20] below top of unit. For compliance with ICC/ANSI A-117.1-2003 and 2020 ADA ADA, Accessibility Standards install unit so that top edge of towel dispenser opening is 48" [1219] maximum Above Finished Floor (AFF) only if clear floor reach access is provided. Be advised that local codes may require mounting so that top of towel dispenser opening is 40" [1016] max AFF (e.g. California UBC/Title 24).

RWO required is 16" [406] W x 54-3/4" [1392] H x 4" [102] D minimum

**WARRANTY**

One (1) Year from date of Invoice