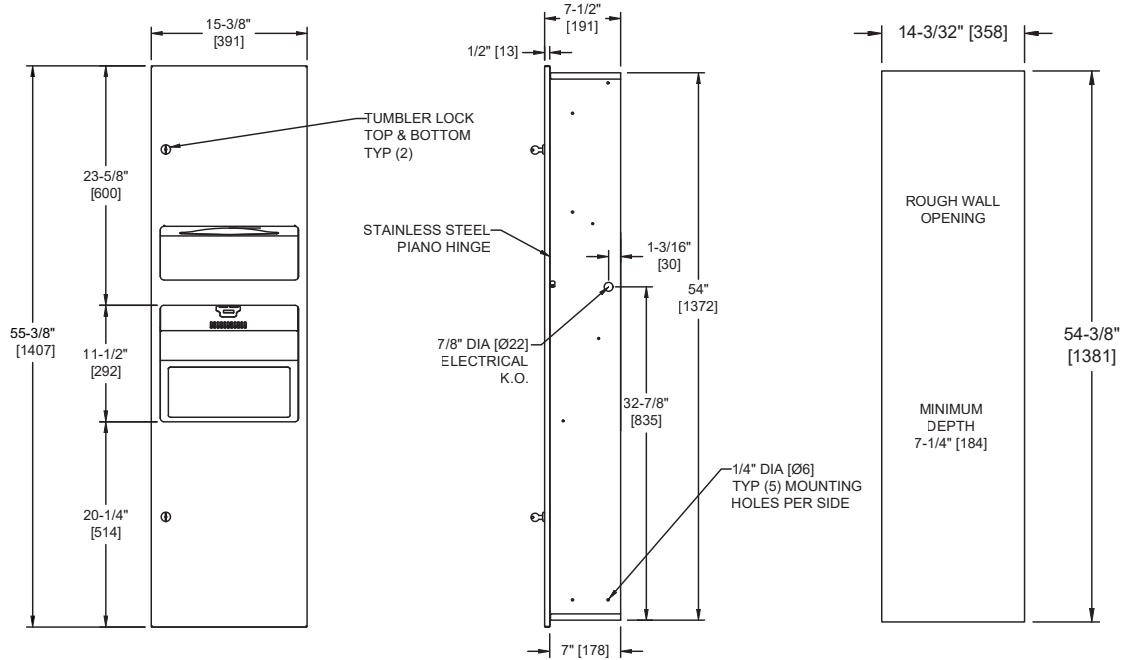


**Simplicity Collection Cabinet for 64672-1 & 64672-2**

Paper Towel Combination Units

Simplicity

MasterFormat Section 10 28 13



Scan for Information



**SUSTAINABILITY/LEED**

MR 4.1 (1) EQ 4.1 (1) EAp2 (0)  
MR 4.2 (1) EQ 4.2 (1) EA 1 (1-19)  
MR 6 (1) EQ 4.4 (1)

**NOTE:**  
ALL DIM'S INCH [MM]  
ILLUSTRATION FOR REF ONLY AND NTS  
FOR CLEANING INSTRUCTIONS SEE APPROPRIATE SECTIONS IN  
PRODUCT CARE & MAINTENANCE BULLETIN (PCM) ON ASI WEBSITE

**PRODUCT OVERVIEW**

Cabinet only for the Simplicity Collection 3-in-1 – Paper Towel Dispenser, HIGH SPEED Hand Dryer & Waste Receptacle which dispenses 500 standard multi-fold or 400 standard C-fold paper towels and shall have a waste capacity of 6.8 gal (26 L). Durable Matte Black Powder Coated 20 gauge stainless steel cover. Cabinet only – no hand dryer included.

**KEY FEATURES & SPECIFICATIONS**

- 3-In-1 - Cabinet Only
- Seamless construction, crisp lines and minimalistic design
- Type 304 Stainless Steel - Matte Black Powder Coated
- Concealed multi-staked hinge - 3/16" diameter [Ø5]
- Cabinet Only

**OPERATION & MAINTENANCE**

Paper towels are manually withdrawn through dispensing slot. Unit will continue to feed towels properly when reloaded with a partial load in place. User activates dryer by placing hands in the sensor zone indicated by graphic on door. Drying time is automatically initiated as long as movement is sensed up to the maximum run time to prevent accidental hold-on. Dryer automatically shuts off after time-out when hands are removed from the sensor zone. Refill dispenser by unlocking door and replacing towels for an empty or partially empty unit. Dispenser supply is replenished and waste container is emptied manually on cycles determined by maintenance needs. Locking fullface door over compartments prevents unauthorized access or removal. Full cover and spring-hinge flap door on WR prevents unsightly overloads.

**TECHNICAL INFORMATION / PRODUCT PROPERTIES**

Property	Value
Dimensions	15-3/8" [391] W x 55-3/8" [1407] H x 7-1/2" [191] D
Construction	Type 304 Stainless Steel - Matte Black Powder Coated Concealed multi-staked hinge - 3/16" diameter [Ø5]
Mounting	Recessed
Capacity	Cabinet Only

**INSTALLATION**

Mount unit in wall recess using #10 [M5] self-threading screws (by others) through concealed mounting holes provided. Recommended mounting height of 60" [1524] to top of towel dispenser slot requires top of Rough Wall Opening (RWO) to be 75-1/2" [1918] AFF. For compliance with HC accessibility standards requiring towel dispenser to be below 43-5/16" [1100] AFF and dryer nozzle to be above 35-7/16" [900] AFF locate top of RWO at 58-13/16" [1494] AFF. See unit diagram for electrical service cable rough-in location. Electric service (provided by others) is brought to RWO at location indicated on diagram above and is hooked up (by others) in accordance with schematic and OM & IG provided with dryer unit. Dryer is mounted to chassis wiring box with four (4) 1/4-20 pan head screws (provided by others) through bushings in heavy-duty back plate. Electrical service is connected (by Electrician) prior to installing cover. Cover is secured to back plate with recessed socket-pan-head tamperresistant pin-hex bolts (supplied by others) with security pin-hex driver (supplied by others). Note that top of RWO is 1/2" [13] below top of unit.

Rough Wall Opening (RWO) required is 14-3/32" [358] W x 54-3/8" [1381] H x 7-1/4" [184] D minimum

**WARRANTY**

One (1) Year from date of Invoice