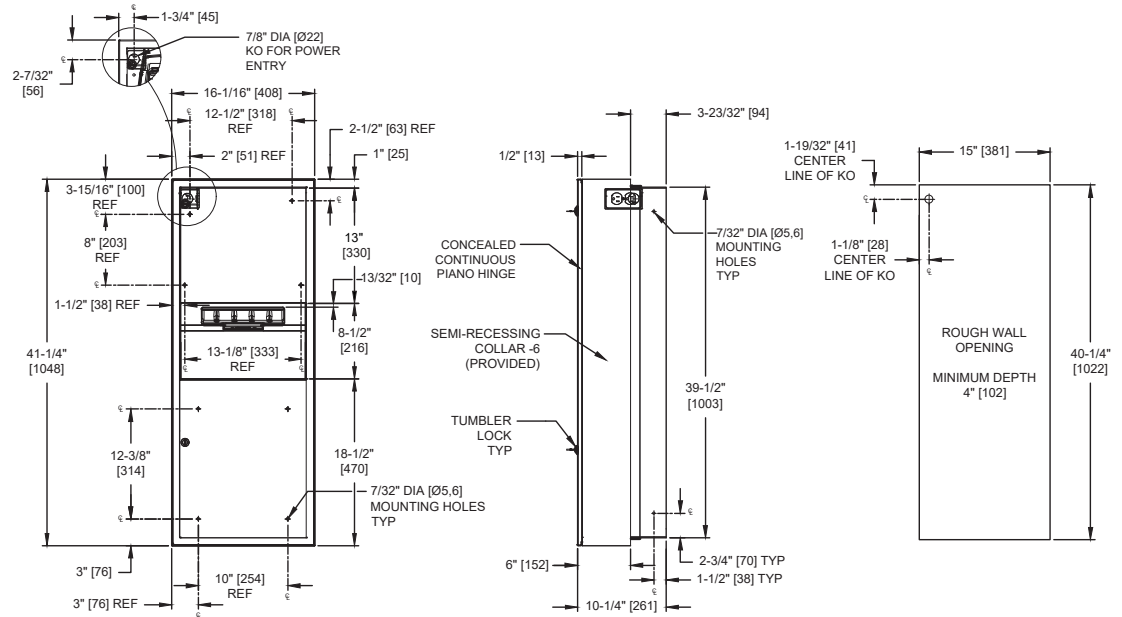
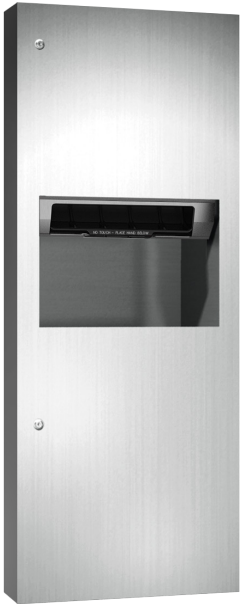


Simplicity™ Collection Automatic Roll Paper Towel Dispenser & Waste Receptacle - 110-240V AC – Semi-Recessed

Paper Towel Combination Units

Simplicity

MasterFormat Section 10 28 13



Scan for Information



SUSTAINABILITY/LEED

MR 4.1 (1) MR 6 (1) EQ 4.2 (1)
MR 4.2 (1) EQ 4.1 (1) EQ 4.4 (1)

NOTE:
ALL DIM'S INCH [MM]
ILLUSTRATION FOR REF ONLY AND NTS
FOR CLEANING INSTRUCTIONS SEE APPROPRIATE SECTIONS IN
PRODUCT CARE & MAINTENANCE BULLETIN (PCM) ON ASI WEBSITE

PRODUCT OVERVIEW

Proximity sensing no-touch unit holds and dispenses one 8" diameter [Ø203] x 8" wide [203] standard towel roll up to 800 ft. (244m) long and one 8" wide [203] stub roll up to 4" diameter [Ø102] and automatically changes over to main roll when finished with stub roll when feed tabs are properly engaged. Waste receptacle has a capacity of 9.9 gallons (37.3 L). Semi-recessed with stainless steel collar. Powered by AC plug-in adapter – C-UL-US and CE approved internal low-voltage adapter (supplied) using 110- 240VAC, 50/60 Hz and providing output of 5VDC @ 1A and operates automatically to activate towel dispensing when hands are placed in sensor zone. At each activation unit feeds out a length of towel selected by owner by setting length, delay and paper saver switches.

KEY FEATURES & SPECIFICATIONS

- Seamless construction, crisp lines and minimalistic design
- "Touch Free" Dual Paper Towel Dispenser
- Cabinet & Frame made of 20 gauge Type 304 Stainless Steel - Satin Finish
- Concealed multi-staked hinge - 3/16" diameter [Ø5], Tumbler lock keyed
- Semi-Recessed - w/ -6 collar
- Automatic - AC - 110 - 240V - "No Touch"
- RollTowels - up to 800 ft. [244M] Length / 9.9 Gal. (37.3 L) Waste Capacity

OPERATION & MAINTENANCE

Towels are dispensed one length at a time automatically when hands are placed in sensor zone until supply is depleted. Owner predetermines length of towel dispensed by making selections on three (3) three-position switches for length, delay, and economy. Unit may be reloaded with a full roll to automatically start when finished with an existing partial roll and will continue to feed properly when reloaded with a full roll and partial roll is transferred to stub roll position. Refill dispenser by unlocking door and replacing towel roll for an empty or partially empty unit. Dispenser supply is replenished and waste receptacle is emptied manually on cycles determined by maintenance needs. Make sure no batteries are in battery compartment. LED will indicate sensing only. Locking full-face door over compartments prevents unauthorized access or removal.

TECHNICAL INFORMATION / PRODUCT PROPERTIES

Property	Value
Dimensions	16-1/16" [408] W x 41-1/4" [1048] H x 10-1/4" [261] D
Construction	Type 304 Stainless Steel - Satin Finish Concealed multi-staked hinge - 3/16" diameter [Ø5]
Power	110-240V AC
Operation	Automatic "No-Touch"
Mounting	Semi-Recessed - w/ 6" collar
Capacity	Roll Towels - up to 800 ft. Length / 9.9 Gal. (37.3 L) Waste Capacity

INSTALLATION

Install unit in wall recess using #10 self-threading screws (by others) through concealed mounting holes provided. Note that top of Rough Wall Opening (RWO) is 3/4" [19] below top of unit. For compliance with 2010 ADA Accessibility Standards, install unit so that top edge of towel dispenser opening is 48" [1219] maximum Above Finished Floor (AFF). Power is supplied by code approved cable or conduit (by others) to RWO at any one of three (3) available locations indicated on diagram and terminated in utility simplex outlet box (provided) inside cabinet. Power required is 110-240VAC at 50/60 Hz protected by a 15A circuit breaker (by others) for low voltage adapter that draws 1/4 Amp. Power adapter for dispenser unit is supplied cabled and plugged into dispenser and is plugged into simplex outlet (by others). SR collar is installed on cabinet prior to mounting in wall recess following procedure described on SR Collar Data Sheet.

RWO required is 15" [381] W x 40-1/4" [1022] H x 4" [102] D

WARRANTY

One (1) Year from date of Invoice