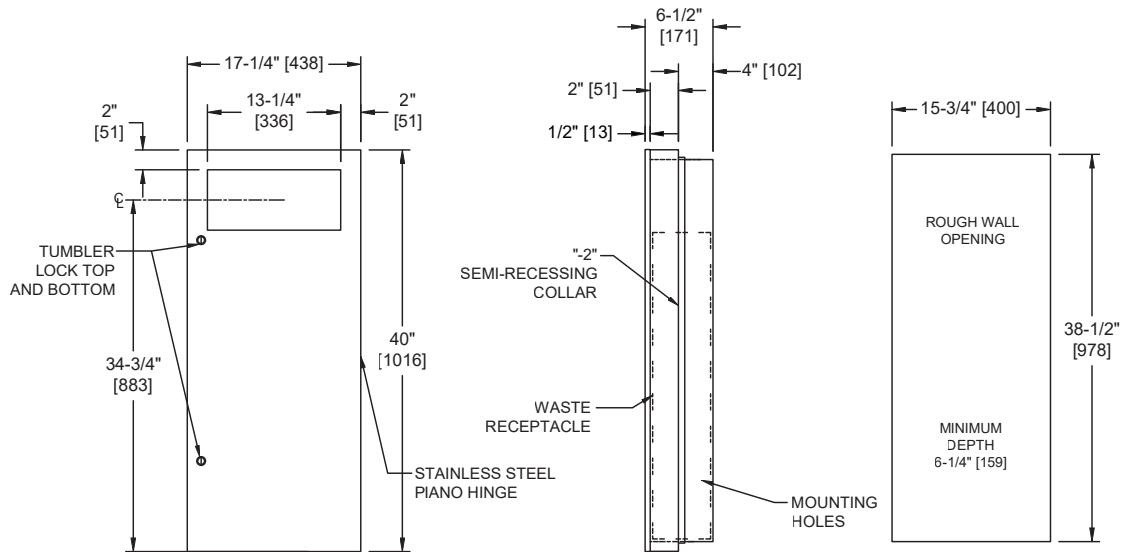


Simplicity™ Collection Waste Receptacle – Semi-Recessed

Waste Receptacles

Simplicity

MasterFormat Section 10 28 13



Scan for Information



SUSTAINABILITY/LEED

MR 4.1 (1) MR 6 (1) EQ 4.2 (1)
MR 4.2 (1) EQ 4.1 (1) EQ 4.4 (1)

NOTE:
ALL DIM'S INCH [MM]
ILLUSTRATION FOR REF ONLY AND NTS

PRODUCT OVERVIEW

Stainless steel waste receptacle holds 12 gal. (45.4 L) of washroom waste materials. Door held closed with two (2) tumbler locks. Semi-recessed with 2" stainless steel collar. Waste is inserted through opening at upper section of unit. Waste container is emptied manually. Locked door prevents unauthorized access or removal. Full face door shall be formed from one piece of 18 gauge alloy 18-8 type 304 stainless steel, cabinet shall be 20 gauge same grade stainless steel.

KEY FEATURES & SPECIFICATIONS

- Seamless construction, crisp lines and minimalistic design
- Type 304 Stainless Steel - Satin Finish
- Semi-Recessed - w/ 2" collar
- 12.0 Gal. (45.4 L) Waste Capacity

OPERATION & MAINTENANCE

Waste is inserted through opening at upper section of unit. Waste receptacle is emptied manually on a cycle determined by maintenance needs. Locking door prevents unauthorized access or removal.

TECHNICAL INFORMATION / PRODUCT PROPERTIES

Property	Value
Dimensions	17-1/4" [438] W x 40" [1016] H x 6-3/4" [171] D
Construction	Type 304 Stainless Steel - Satin Finish
Mounting	Semi-Recessed - w/ 2" collar
Capacity	12.0 Gal. (45.4 L) Waste Capacity

INSTALLATION

Mount unit in wall recess with four (4) #10 self-threading screws (by others) through mounting holes in cabinet. For compliance with 2010 ADA Accessibility Standards, install unit with top edge no higher than 48" [1219] Above Finished Floor (AFF). SR collar is installed on cabinet prior to mounting in wall recess following procedure described on SR Collar Data Sheet.

Rough Wall Opening (RWO) required is 15-3/4" [400] W x 38-1/2" [978] H x 4-1/4" [102] D minimum

OPTIONS

N/A

WARRANTY

One (1) Year from date of Invoice