

Healthcare Accessories

Durable and Elegant, Hygienic
Stainless Steel Accessories



HEALTHCARE Product Selection Guide

ASI offers the widest selection of products specifically designed for healthcare settings. All of these products contribute to providing you more choices to design the most hygienic environment for patients and caregivers.

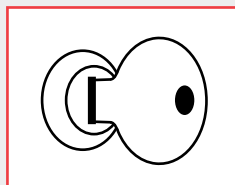
From innovative products like new antimicrobial grab bars and a slow close shower seat, to glove dispensers, security cabinets, and hazardous waste disposals—ASI washroom accessories are designed for ease of use, safety, durability, and peace of mind.

WHAT MAKES OUR HEALTHCARE ACCESSORIES UNIQUE?



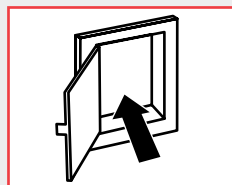
STAINLESS STEEL CONSTRUCTION

Our cabinets are made of type 304 (18-8) stainless steel (unless otherwise noted), which is durable, hygienic, stain-resistant, and easy to clean.



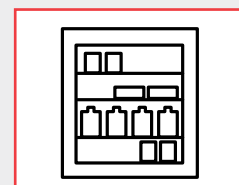
TUMBLER LOCK

The design of our products with tumbler locks allow for the removal of internal components for sterilizing or autoclaving when necessary.



CONVENIENT PASSAGE

Our specimen pass box and cabinet enables easy access and safe handling of specimens from patient area to laboratory.



ADJUSTABLE SHELVES

The design of our cabinets offers flexibility with adjustable shelves for customizable storage and ease of use.

ASI IS COMMITTED TO DELIVERING THE INDUSTRY STANDARD, OR BETTER.

ASI uses type 304 (18-8) stainless steel for all product fabrication, or clearly notes otherwise—not all of our competition can say the same.

Type 304 is the preferred choice in stainless steel due to its excellent value, durability, ease of cleaning, and moisture resistance qualities. It has been proven to withstand the test of time, physical abuse, and allows for quick and easy maintenance. As an added bonus, stainless steel has a high recycled content and can be fully recyclable.

In critical environments, there is no room for error. ASI understands your need for dependable products with long lasting value and looks you'll want to show off, and is continuously innovating to provide you with the best in integrated products for your healthcare facility and washrooms.

See the complete collection of healthcare and other washroom accessories at americanspecialties.com



0557 SURFACE MOUNTED BEDPAN RACK

Surface mounted rack provides convenient storage for one conventional sized bedpan.

Overall Dimensions:
12" x 11" x 4⁷/₈"
(305 x 279 x 124 mm)

MODEL OPTIONS:

- 0556** Larger for storing one conventional sized bedpan and one urinal bottle.
- 0559** Similar to 0556, but designed to hold two conventional sized bedpans.



0515 SPECIMEN PASS BOX (TURNTABLE)

Satin finish stainless steel turntable is track mounted with ball bearing rotation mechanism at top and bottom, and is fully enclosed with only its 6" x 10¹/₂" (152 x 267 mm) pass opening accessible for user privacy.

Held closed with a tumbler lock. When unlocked, cylinder is removable for sanitizing.



0548 RECESSED SHARPS DISPOSAL CABINET

Satin finish stainless steel. Marked with graphic label indicating Biohazard. Holds one Becton, Dickinson and Company (BD) brand Sharps Collector model #305443 (not included).

Overall Dimensions:
13³/₄" x 19¹/₁₆" x 5¹/₄"
(349 x 486 x 133 mm)

MODEL OPTION:

- 0548-9** Surface mounted unit



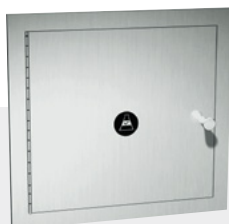
0551 RECESSED BEDPAN AND URINAL BOTTLE CABINET

Satin finish stainless steel storage for bedpan and urinal bottle. 1/2" space at top and bottom of door allows for air circulation.

Overall Dimensions:
15" x 28" x 5¹/₄"
(381 x 711 x 133 mm)

MODEL OPTION:

- 0558-1** Holds one conventional type bedpan and one wash basin.



8154 SPECIMEN PASS-THROUGH CABINET

Provides a convenient passage from patient area into laboratory. Internal latch prevents simultaneous door opening.

MODEL OPTIONS:

- 8155** Extension sleeve and flange for recessed specimen pass-through cabinet.
- 8156** Same as 8154 including 8155 extension sleeve.



0815 FLOOR STANDING FOOT OPERATED WASTE RECEPTACLE

Foot operated waste receptacle with satin finish stainless steel body and top. Connected with multi-staked piano hinge and features hemmed edges for safety. Holds 8 gal (30.7 L)

Overall Dimensions:
10³/₄" x 20¹⁵/₁₆" x 10"
(273 x 531 x 254 mm)

*All stainless steel is type 304 with satin finish, unless otherwise noted.

HEALTHCARE ACCESSORIES



0546 SECURITY MEDICINE CABINET

Satin finish stainless steel cabinet with two adjustable shelves with hemmed edges. Doors are attached with welded full length piano hinges and have hemmed returns and concealed overlap center to prevent unauthorized access. Paddle type tumbler locked latch with two point security bolts hold both doors closed.

Overall Dimensions:
30" x 30" x 12"
(762 x 762 x 305 mm)



0547 NARCOTICS CABINET - COMBINATION LOCK AND DUAL DOORS

Satin finish stainless steel surface mounted security cabinet with two shelves for controlled narcotic substances. Inner and outer doors with double wall all welded construction, and programmable five button combination tumbler-locked latches with dead bolts for enhanced security.

Overall Dimensions:
11¼" x 15" x 8¾"
(286 x 381 x 210 mm)



0501-X SURFACE MOUNTED SURGICAL GLOVE DISPENSER

Satin finish stainless steel, holds and dispenses gloves from one standard surgical glove box. Fully hemmed-in rolled edges for snag-free dispensing and user safety.

MODEL OPTIONS:

- 0501-1 Dispenser for 1 box
- 0501-2 Dispenser for 2 boxes
- 0501-3 Dispenser for 3 boxes
- 0501-4 Dispenser for 4 boxes



0511 SURFACE MOUNTED BULK DISPENSER, SMALL

Satin finish stainless steel. Dispenses various personal protection equipment such as gloves, caps, and shoe covers (not supplied).

Overall Dimensions:
12⁵/₆₄" x 11" x 5½" (307 x 279 x 140 mm)

MODEL OPTION:

- 0512 Large bulk dispenser

WASHROOM ACCESSORIES



9014 HORIZONTAL SURFACE
9012 MOUNTED PLASTIC BABY
CHANGING STATIONS

Units have concealed damped gas springs to assist in easy one-hand operation. Fabricated of FDA-approved fungus- and bacteria-resistant plastic. Units support a static load of 300 lbs. (136 kg). Safety straps included.

Overall Dimensions (open):

- 9014** (top)
 35⁵/₃₂" x 24¹/₄" x 22¹/₈"
 893 x 616 x 560 mm
- 9012** (bottom)
 36" x 22" x 20⁷/₁₆"
 (914 x 559 x 519 mm)



68523AC-4 SIMPLICITY™ SEMI-RECESSED AUTOMATIC ROLL PAPER TOWEL DISPENSER

Satin finish stainless steel unit dispenses a pre-set length per cycle from 8" standard towel roll up to 800 ft. (244 mm) long. Powered by internal low-voltage adapter.

Overall Dimensions:
 15¹/₄" x 18⁵/₁₆" x 9¹/₂"
 (387 x 465 x 241 mm)

MODEL OPTIONS:

- 68523AC** Surface mounted AC powered unit
68523A Surface mounted battery powered unit
68523A-4 Semi-recessed battery powered unit



6462 SIMPLICITY™ RECESSED PAPER TOWEL DISPENSER & WASTE RECEPTACLE

Satin finish stainless steel. Dispenses 800 multi-fold, or 600 C-fold towels, and has a 9 gal. (34 L) stainless steel waste receptacle.

Overall Dimensions:
 17¹/₄" x 54" x 6¹/₂"
 (438 x 1372 x 165 mm)



9018 HORIZONTAL RECESSED STAINLESS STEEL BABY CHANGING STATION

Door facing and collar made from stainless steel. Unit has a pull handle and concealed damped gas spring, assisting in easy operation. Fabricated of FDA-approved fungus- and bacteria-resistant plastic. Supports a static load of 300 lbs. (136 kg). Includes vinyl-coated, adjustable safety strap.

Overall Dimensions (open):

39⁵/₃₂" x 28¹/₄" x 18¹/₈"
 (995 x 718 x 460 mm)

MODEL OPTIONS:

- 9018-9** Surface mounted with 9" stainless steel collar
9017 Vertical recessed model, similar to 9018
9017-9 Vertical surface mounted model, similar to 9017



0481 DUAL ACCESS SEAT COVER & TOILET TISSUE DISPENSER WITH SANITARY DISPOSAL

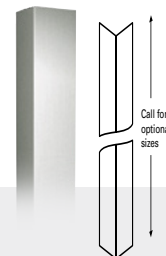
Mounts through partition. Holds 1000 seat covers and four standard rolls of toilet tissue.

Overall Dimensions:
 17³/₈" x 30⁵/₈" x 4¹/₄"
 (441 x 778 x 108 mm)



0258-SS SURFACE MOUNTED FACIAL TISSUE DISPENSER

Overall Dimensions:
 10¹/₄" x 5⁵/₁₆" x 2³/₁₆"
 (260 x 135 x 55 mm)



0533 STAINLESS STEEL CORNER GUARDS

Robust 16 or 18 gauge satin finish stainless steel protects corners. Can be mounted flush to floor or at base height. Surface mounted with adhesive or mounting holes and can have beveled edge, or flat edge legs.

MODEL OPTIONS:

- 0533-48** 48" High
0533-1 Beveled Edge Legs
0533-2 Mounting Holes & Beveled Edge Legs
0533-3 Flat Edge Legs
0533-4 Mounting Holes & Flat Edge Legs

ANTIMICROBIAL GRAB BARS



NEW

ASI's *newest* Stainless Steel Grab Bars offer the protection of our Germ Guard™ Antimicrobial Powder Coating technology.

Now, germs have nowhere to hide.



ASI's ANTIMICROBIAL GRAB BARS **YOUR FIRST LINE OF SURFACE DEFENSE**

Microbes such as Mold, Bacteria, and Yeasts responsible for hospital acquired diseases like MRSA, grow exponentially in favorable environments like healthcare facilities.

ASI's Germ Guard™ grab bars are designed to suppress growth of these types of microbes. They are made from stainless steel and are finished with an electrostatically applied antimicrobial powder coating.

This powder coating is custom formulated to incorporate slow release silver ions (Ag⁺), the most powerful and long lasting natural antimicrobial agent known.

STRAIGHT GRAB BARS WITH SNAP FLANGE **(1 1/2" DIAMETER TUBING)**

MODEL OPTIONS:

3801-18AW 18"	3801-42AW 42"
3801-24AW 24"	3801-48AW 48"
3801-36AW 36"	3802-48AW 48**

(*with intermediate support)

TEST RESULTS

- Independent Lab Tests show a *Bacterial Kill Rate* of greater than 99.95% in the powder coating used on ASI's new Germ Guard™ Grab Bars.
- The powder coating has undergone ASTM tests for Salt Spray, Humidity, Flexibility, Cross Hatch Adhesion, and Impact, to ensure durability.

HOW IT WORKS

- **Step 1:** When the Grab Bar comes in contact with moisture, silver ions are released to the surface.
- **Step 2:** Silver ions penetrate the cell membrane of microbes present on the surface.
- **Step 3:** Silver ions react with the chemistry of the organism rendering it inactive.

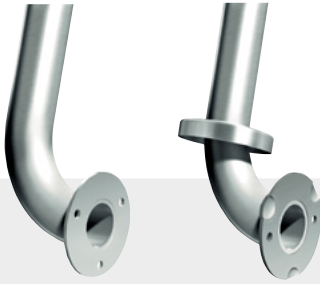
WHY IT LASTS

- Silver ions are impregnated into the powder coating and hence *remain* in the coating.
- Antimicrobial properties *remain constant* even after being subjected to wear and exterior exposure, giving these grab bars an *excellent effective lifetime*.

ASI's Germ Guard™ grab bars are ideal for Hospitals, Pharmaceutical Labs, Doctor and Dental Offices, Assisted Living and Mental Health Facilities, and any location where hygiene is of utmost importance.

ASI GRAB BARS ARE DESIGNED FOR ULTIMATE HYGIENE, SAFETY, AND PEACE OF MIND

STANDARD GRAB BARS



3000/ 3400/ 3500/ 3700/ 3800 SERIES GRAB BARS

All ASI Grab Bars are made in compliance with ADA guidelines for strength requirements. Various configurations feature stainless steel peened or smooth, and white variations. Grab Bars can be custom designed and manufactured to meet any specific architectural requirements.

- 3000 Series** - 1" Diameter concealed mount
- 3400 Series** - 1¼" Diameter exposed mount
- 3500 Series** - 1½" Diameter exposed mount
- 3700 Series** - 1¼" Diameter snap flange (3700-W - White)
- 3800 Series** - 1½" Diameter snap flange (3800-W - White | 3800-AW - Antimicrobial White)



3451 SWING-UP GRAB BAR, LOCKS

18 gauge 1¼" diameter satin finish stainless steel grab bar mounts on bracket. Features vertical position gravity lock with manual release.

Exposed flange (1¼" O.D.) smooth

MODEL OPTION:

3451-P Exposed flange (1¼" O.D.) peened



3701-XX STRAIGHT GRAB BAR

Features include cover that snaps over mounting flange dimples to conceal screws and concealed mounting flange of 3⅜" (79 mm) O.D. diameter with 2 screw holes and 3 locking dimples; ⅛" (3 mm) thick, type 304 stainless steel. Cover is type 304 stainless steel with a satin finish and 22 gauge, 3⅜" (81 mm) diameter. Snap Flange (1¼" O.D.)

MODEL OPTION:

3701-XXP Snap flange (1¼" O.D.) peened



3702-XX STRAIGHT GRAB BAR WITH INTERMEDIATE SUPPORT

18 gauge satin finish stainless steel, 1¼" (32 mm) diameter with flange covers to conceal screws.

Snap Flange (1¼" O.D.) Smooth

MODEL OPTION:

3702-XXP Snap flange (1¼" O.D.) peened



1201-A CURVED SHOWER CURTAIN ROD WITH MOUNTING BRACKETS

Satin finish stainless steel, 1" diameter (25 mm) tubing. Lengths and mounting options available.



7314 SINGLE TOILET TISSUE ROLL HOLDER

Satin finish stainless steel bar is reversible to change handing.

Allows for easy roll replacement by maintenance or guests.

Overall Dimensions:
5³/₁₆" x 3³/₈" x 2³/₁₆"
(131 x 86 x 56 mm)



8205 L-SHAPED PADDED ADA FOLD-UP SHOWER SEAT

½" (13 mm) thick solid white phenolic seat with cushion. Stainless steel seat frame, support legs, flanges, and bracket. Seat measures 33" (838 mm) wide and projects 22⁷/₈" (581 mm) from the wall.

MODEL OPTIONS:
8205-L Left handed (shown)
8205-R Right handed



7308 SINGLE ROBE HOOK

Satin finish stainless steel hook extends 2⁵/₁₆" (59 mm) from wall or door.

Suitable for robes, clothing, or small bags.



7383 TOWEL SHELF WITH HANGER ROD

Heavy-duty unit with ¾" diameter stainless steel tubing. Shelf has open spaces between tubes to reduce weight and facilitate drying.

Overall Dimensions:
23⁵/₈" x 3¹/₂" x 8¹⁵/₁₆"
(600 x 89 x 227 mm)



8204 COMPACT PADDED RECTANGULAR ADA FOLD-UP SHOWER SEAT

5/16" (8 mm) thick, one-piece, solid phenolic seat with padding. Frame, support legs, flanges, and bracket are satin finish stainless steel. Seat measures 18" (457 mm) wide and projects 16½" (419 mm) from wall.

SHOWER & TUB ACCESSORIES



8206 L-SHAPED PHENOLIC ADA FOLD-UP SHOWER SEAT

½" (13 mm) thick solid white phenolic seat. Stainless steel seat frame, support legs, flanges, and bracket. Seat measures 33" (838 mm) wide and projects 22⁷/₈" (581 mm) from the wall. Seat is field reversible to change handing. For 28" (711 mm) wide, use suffix -28.

MODEL OPTIONS:

8206-L Left handed (shown)

8206-R Right handed

NEW

Available in **Slow Close** with gas struts for added ease and safety, use suffix **-SC-R/-L**.



8208 STAINLESS STEEL ADA FOLD-UP SHOWER SEAT

Fabricated with stainless steel in satin finish. Requires only one hand operation. Seat measures 33" (838 mm) and projects 23" (584 mm) from the wall.

MODEL OPTIONS:

8208-L Left handed

8208-R Right handed (shown)



8202 L-SHAPED PHENOLIC FOUR-LEG FOLD-UP SHOWER SEAT

½" (13 mm) thick solid white phenolic seat with black core. Stainless steel seat frame and support legs. Front legs fold up automatically when seat is raised. Never needs feet adjustment after correct installation. Seat measures 33½" (851 mm) and projects 15¹⁷/₃₂" (395 mm) from the wall.

Seat is field reversible to change handing. Right handed orientation shown.



8203 COMPACT PHENOLIC FOLD-UP SHOWER SEAT

⁵/₁₆" (8 mm) thick, solid phenolic seat with black core. Stainless steel frame, bracket, and support legs. Features a self-locking mechanism. Seat measures 18" (457 mm) wide and projects 16" (406 mm) from wall.

Additional width options available in 20", 28" and 33" (order with suffix -20, -28 and -33).



8207 STAINLESS STEEL RECTANGULAR ADA FOLD-UP SHOWER SEAT

Seat has slatted design and is fabricated of stainless steel. Features a self-locking mechanism. Seat measures 18" (457 mm) wide and projects 17³/₈" (444 mm) from wall.



8358 FOLDING TUB SEAT

½" (13 mm) thick solid phenolic seat with white top and black core. Satin finish stainless steel frame, mounting bracket, and retainer hook. Seat measures 15" (387 mm) wide and projects 33³/₄" (860 mm) from wall.



0349 FOOT OPERATED SURGICAL SOAP DISPENSER

Pneumatic pump mechanism, 32 oz. (0.9 L) polyethylene container. Free turning spout is type 316 stainless steel. 96" (2438 mm) long vinyl tubing attaches to anti-slip foot pump. Dispenses surgical soaps, antiseptic solutions, and synthetic detergents.

Overall Dimensions:
4¼" x 12¾" x 9"
(108 x 324 x 229 mm)

Spout Projection: 9" (229 mm)



0332 VANITY MOUNTED MANUAL LIQUID SOAP DISPENSER

Corrosion-resistant valve with stainless steel spout and chrome plated brass escutcheon plate. 34 oz. (1 L) shatter-resistant polyethylene globe.

Overall Dimensions:
3⁷/₁₆" x 10²/₃₂"
(87 x 271 mm)

Spout Projection: 6" (152 mm)

MODEL OPTIONS:
0332-C 20 oz. globe
0332-D 6" spout
0332-64 with 1" (25 mm) spacer



0336 VANITY MOUNTED MANUAL FOAM SOAP DISPENSER

Dispenser plunger cap, stem and body, spout, escutcheon, and base sleeve fabricated of stainless steel. 34 oz. (1 L) shatter-resistant HDPE globe.

Overall Dimensions:
3¹/₂" x 15³/₄"
(89 x 372 mm)

Spout Projection: 4" (102 mm)

MODEL OPTION:
0336-D 6" (152 mm) spout



0350 SURGICAL SOAP DISPENSER

Dispenses antiseptic solutions, and synthetic detergent soaps. Chrome plated brass body. Capacity: 16 oz. (0.5 L) white polyethylene globe.

Overall Dimensions:
3³/₈" x 6¹/₂" x 5¹/₈"
(86 x 165 x 130 mm)



0326 RECESSED HORIZONTAL LIQUID SOAP DISPENSER

Stainless steel with satin finish, all-purpose soap valve, 57 fl. oz. (1.7 L) capacity.

Overall Dimensions:
10¼" x 6" x 4½"
(260 x 152 x 115 mm)



0318 LIQUID SOAP DISPENSER AND SHELF

Holds and dispenses 83 oz (2.5 L) of liquid soap. Shelf/cover held closed with a concealed latch.

Overall Dimensions:
17³/₈" x 3⁷/₁₆" x 5¹/₁₆"
(440 x 87 x 130 mm)

SOAP DISPENSERS



0335 VANITY MOUNTED AUTOMATIC FOAM SOAP DISPENSER

Hands-free stainless steel foam soap dispenser with 50.7 oz. (1.5 L) capacity. Battery or AC powered.

Overall Dimensions:

1½ x 3¹³/₁₆"
(38 x 97 mm)

Spout Projection: 4" (102 mm)

MODEL OPTIONS:

0334 Liquid soap dispenser
Use suffix **-B** for bright finish
Use suffix **-S** for satin finish



EZ FILL™ AUTOMATIC LIQUID AND FOAM SOAP DISPENSING SYSTEM

Available in top-fill, multi-feed for up to six soap dispensers with a 6L tank capacity, or stand-alone 1L capacity dispensers. Polished chrome or matte black finishes, and battery or AC powered options.

MODEL OPTIONS:

0390 Top-fill, multi-feed kit
0390-(N) Top-fill, multi-feed dispenser heads (liquid)
0391-(N) Stand-alone dispenser (liquid)
0393-(N) Top-fill, multi-feed dispenser heads (foam)
0394-(N) Stand-alone dispenser (foam)
Use suffix **-41** for matte black finish



0397 EZ FILL™ WATER FAUCET TO MATCH EZ FILL™ SOAP DISPENSING SYSTEM

Hands-free operation, battery or AC powered, in polished chrome or matte black finishes.

MODEL OPTIONS:

0397-1A Battery powered, chrome
0397-1AC AC powered, chrome
Use suffix **-41** for matte black finish



0345 HORIZONTAL LIQUID SOAP DISPENSER

Satin finish stainless steel with plastic valve body and push button. 40 fl. oz (1.2 L) capacity with tamper-resistant refill indicator.

Overall Dimensions:

8³/₁₆" x 4¹³/₁₆" x 3¹⁵/₁₆"
(208 x 112 x 160 mm)

MODEL OPTION:

0347 Vertical Soap Dispenser
4¹³/₁₆" x 8³/₁₆" x 3¹⁵/₁₆"
(112 x 208 x 160 mm)



0362-41 MATTE BLACK AUTOMATIC LIQUID SOAP DISPENSER

Stainless steel with matte black finish, 30 oz. (900 ml) capacity. Battery powered.

Overall Dimensions:

4¹³/₁₆" x 10⁵/₈" x 4¹/₈"
(122 x 270 x 105 mm)

MODEL OPTION:

0362 Satin stainless steel finish



20364 ROVAL™ AUTOMATIC LIQUID SOAP DISPENSER

Satin finish stainless steel, 34 oz. (1 L) capacity. Battery powered.

Overall Dimensions:

5½" x 10⁷/₈" x 4"
(140 x 276 x 102 mm)

MODEL OPTION:

20365 Foam soap dispenser

HAND DRYERS



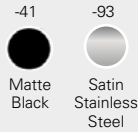
20201 TRI-UMPH™ HIGH-SPEED HAND DRYER (WHITE)

Ergonomic design and no water splash-back. Owner controlled air temperature and air speed. Replaceable Triple HEPA Filter System. <12 second dry time. Decibel level: 62.9-67.2 dB-A @ 2M.

Overall Dimensions:
12¹¹/₁₆" x 23¹/₈" x 7¹¹/₁₆"
(200 x 588 x 322 mm)

MODEL OPTION:
20200 Silver and black

VOLTAGE OPTIONS:
20201-2 – 208-240V
20201-3 – 277V



0196 TURBO-PRO™ HIGH-SPEED ADA HAND DRYER

ADA-compliant, high-speed hand dryer with replaceable HEPA filter. Owner controlled air temperature and air speed. <15 second dry time. Decibel level: 68-73.8 dB-A @ 2M.

Overall Dimensions:
8⁵/₈" x 13⁹/₁₆" x 4"
(219 x 345 x 101mm)

MODEL OPTIONS:
0196-00 White
0196-41 Matte black
0196-93 Satin stainless

VOLTAGE OPTIONS:
0196-1 – 110-120V
0196-2 – 208-240V



0198-MH SAFE-DRI™ MENTAL HEALTH APPROVED HIGH-SPEED HAND DRYER

18 gauge satin finish stainless steel cover and dry chamber. Tamper-resistant and anti-ligature no-touch dryer designed for Behavioral Health environments. <15 second dry time. Decibel level: 66 dB-A @ 2M.

Overall Dimensions:
12⁹/₈" x 15³/₄" x 5⁴/₁₆"
(320 x 400 x 140 mm)

MODEL OPTIONS:
0198-MH-1 – 115-120V
0198-MH-2 – 208-240V



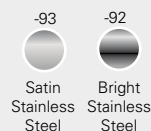
0199 TURBO ADA™ SURFACE MOUNTED HIGH-SPEED HAND DRYER

ADA compliant. Owner controlled air temperature and air speed. <15 second dry time. Decibel level: 68.9-74.3 dB-A @ 2M.

Overall Dimensions:
10⁵/₈" x 8¹⁵/₃₂" x 4"
(270 x 215 x 102 mm)

MODEL OPTIONS:
0199-00 – White
0199-93 – Satin stainless

VOLTAGE OPTIONS:
0199-1 – 110-120V
0199-2 – 208-240V
0199-3 – 277V



0197 TURBO-DRI™ HIGH-SPEED HAND DRYER

Powerful, yet quiet, <12 seconds dry time. Owner controlled air temperature and air speed. Decibel level: 59-72 dB-A @ 2M.

Overall Dimensions:
8¹/₁₆" x 11¹⁹/₆₄" x 7⁵/₆₄"
(205 x 287 x 180 mm)

MODEL OPTIONS:
0197 – White
0197-92 – Bright stainless
0197-93 – Satin stainless

VOLTAGE OPTIONS:
0197-1 – 110-120V
0197-2 – 208-240V



64672-1 RECESSED THREE-IN-ONE COMBINATION UNIT WITH HIGH-SPEED HAND DRYER

Paper towel dispenser with waste receptacle and <15 second automatic hand dryer (110-120V). Decibel level: 68.9-74.3 dB-A @ 2M.

Overall Dimensions:
13³/₈" x 55³/₈" x 7¹/₂"
(391 x 1407 x 191 mm)

SECURITY ACCESSORIES



104 FRONT MOUNT SECURITY MIRROR WITH WALL ANCHOR

Formed stainless steel mirror with #8 mirror polish finish.

Overall Dimensions:
10¹/₈" x 11⁹/₁₆"
(256 x 294 mm)

MODEL OPTION:

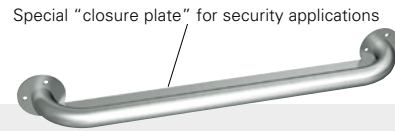
104-14 20 Gauge, #8 mirror polish finish.



122 SECURITY CLOTHES HOOK, SQUARE

Chase mounted. Snaps down for safety if excessively loaded.

Overall Dimensions:
4¹/₄" x 4¹/₄" x 2¹/₄"
(108 x 108 x 57 mm)



SECURITY SERIES GRAB BARS

Designed to meet and exceed ADAAG requirements. Capable of holding in excess of 1350 lbs (612.4 kg) when properly installed.

MODEL OPTIONS:

Rear Mounted	Length	Exposed Mounted	Length
160	24" (610)	159	18" (457)
161	30" (762)	162	30" (762)
163	36" (914)	164	36" (914)
166	42" (1067)	165	24" (610)
168	48" (1219)	167	42" (1067)
		169	48" (1219)



117 FRONT MOUNT SECURITY FOLDED-TOILET TISSUE HOLDER

Open design for detection of contraband. Dispenses 320 folded sheets when fully loaded.

Overall Dimensions:
4³/₄" x 9 x 2³/₄"
(120 x 230 x 70 mm)



110 RECESSED SECURITY TOILET TISSUE HOLDER

Holds one standard toilet tissue roll. Hidden contraband causes roll to project, allowing for detection.

Overall Dimensions:
7¹/₄" diameter x 4¹/₂" depth
(184 mm diameter x 114 mm depth)

MODEL OPTIONS:

110-1 Chase mount, with 7" (179 mm) square flange
110-13 Front mount, with 7" (179 mm) square flange



128-1 SECURITY BOOK SHELF & CLOTHES HOOK STRIP

Surface mounted. Safety hooks snap down for safety if excessively loaded.

Overall Dimensions:
18" x 11" x 8"
(457 x 279 x 203 mm)

MIRRORS & MEDICINE CABINETS



0600 SERIES ANGLE FRAME MIRROR

$\frac{3}{4}$ " x $\frac{5}{8}$ " (19 x 16 mm) 18 gauge stainless steel frame with mitered corners. Installed on vertical bracket with locking screws.

0620 SERIES CHAN-LOK PLATE GLASS MIRROR

$\frac{1}{2}$ " x $\frac{1}{2}$ " (13 x 13 mm) 20 gauge stainless steel channel. Installed on two wall brackets and held secure by theft-resistant screws.

20655 SERIES ROVAL™ INTER-LOK STAINLESS STEEL FRAMED MIRROR WITH SHELF

Stainless steel mirror frame and 6" wide curved edge shelf with polished seamless mitered corners. 0.25" (6.4 mm) thick plate glass mirror.



0535 SERIES FIXED TILT MIRROR

Offers visibility for wheelchair patients. Frame fabricated of 20 gauge stainless steel with a satin finish. Mirror is tapered from 4" (102 mm) at top to 1" (25 mm) at bottom.

0600-T SERIES ADJUSTABLE TILT MIRROR

Provides easy visibility for wheelchair patients. 18 gauge satin finish stainless steel frame, tilts 6" (152 mm) with bottom mounted on full width stainless steel piano hinge.



0952 RECESSED STAINLESS STEEL MEDICINE CABINET

Stainless steel framed mirror swing door, with full length piano hinge, magnetic catch, and three removable shelves. Mirror depth: $\frac{1}{4}$ " (6 mm).

Overall Dimensions:
18 $\frac{1}{4}$ " x 24 $\frac{1}{4}$ " x 4 $\frac{1}{2}$ "
(464 x 616 x 114 mm)

MODEL OPTIONS:
0952-B Larger than 0952
0953 Surface mounted



8338 RECESSED POWDER COATED MEDICINE CABINET

White powder coated finish. Stainless steel channel framed mirrored door with $\frac{1}{4}$ " (6 mm) thick plate glass, has continuous piano hinge and magnetic catch. Two adjustable shelves.

Overall Dimensions:
14 $\frac{1}{8}$ " x 20 $\frac{3}{16}$ " x 5"
(359 x 513 x 127 mm)



8339 RECESSED POWDER COATED MEDICINE CABINET

White powder coated finish. Stainless steel channel framed mirrored door with $\frac{1}{4}$ " (6 mm) thick plate glass, has continuous piano hinge and magnetic catch. Two adjustable shelves.

Overall Dimensions:
16 $\frac{3}{16}$ " x 22 $\frac{3}{16}$ " x 5"
(411 x 564 x 127 mm)



8340 RECESSED POWDER COATED MEDICINE CABINET

White powder coated finish. Stainless steel framed mirror swing door, with full length piano hinge and magnetic catch. Three removable shelves. Mirror depth: $\frac{1}{4}$ " (6 mm).

Overall Dimensions:
18 $\frac{1}{4}$ " x 24 $\frac{1}{4}$ " x 4 $\frac{1}{2}$ "
(464 x 616 x 114 mm)

ASI GROUP

YOUR SINGLE SOURCE FOR HEALTHCARE

Welcome to the ASI Group – the world's leading manufacturer of commercial Washroom Accessories, Toilet Partitions, Lockers, and Visual Display Products. So what makes ASI so unique? Only ASI designs, engineers, and manufactures fully integrated solutions, so all of our products work together seamlessly.

ASI Group takes special care to ensure all products used in Healthcare environments are hygienic, safe, and eco-friendly.



WASHROOM ACCESSORIES

The world's leading manufacturer of commercial washroom accessories.

TOILET PARTITIONS

ASI offers the most comprehensive collection of partitions ranging in materials and styles, including privacy options, all from one source.

FEATURED:

- 1) Moisture Guard™ Plastic Laminate
- 2) Powder Coated Steel
- 3) Stainless Steel
- 4) Black Core Phenolic
- 5) Solid Plastic (HDPE)
- 6) Alpaco European Style Privacy Stalls

(Products listed shown from Left to Right)



LOCKERS

Our extensive line of lockers come *standard* with leading-edge features and all can be ADA Compliant.

VISUAL DISPLAY PRODUCTS

The broadest selection of surface materials, frame styles, colors, and flexible installation configurations.



ASI GROUP: where Innovation, Speed, Choice, and Reliability provide Peace of Mind.

ONLY ASI CAN SUPPLY EVERYTHING FOR YOUR HEALTHCARE FACILITY



Your single source for: **privacy, hygiene, safety, and eco-friendly products.**

- Baby Changing Stations
- Combination Units
- Feminine Hygiene Vendors and Disposals
- Hand Dryers
- Grab Bars
- Lockers and Storage Devices
- Mirrors
- Paper Towel Dispensers
- Security and Mental Health Accessories
- Shower/Tub Accessories
- Soap Dispensers
- Toilet Partitions
- Toilet Tissue Dispensers
- Visual Display Products
- Waste Receptacles



© 2019 American Specialties, Inc.

American Specialties, Inc.
441 Saw Mill River Rd., Yonkers, NY 10701
Tel: 914.476.9000 Fax: 914.476.0688
E-mail: info@americanspecialties.com
Web: americanspecialties.com

ASI091819