

# SURFACE STYLE MEETS CORE TOUGHNESS

## FEATURES:

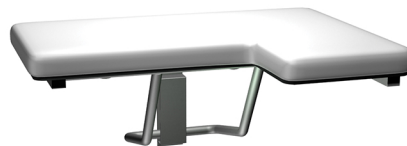
- 1/2" thick solid white phenolic seat with slots for water drainage and slip resistance
- All metal parts are constructed of type 304 stainless steel with a satin finish
- EASY one-hand operation
- Field Reversible for left or right hand configuration
- Front legs fold up automatically when seat is raised
- Rubber cushioned leveling feet compensate for uneven floors



## ADDITIONAL SHOWER SEATS AVAILABLE:



**8203 COMPACT PHENOLIC FOLD-UP SHOWER SEAT**



**8205 FOLD-UP SHOWER SEAT**



**8208 FOLD-UP L-SHAPED SHOWER SEAT**

ADA-Compliant L-shaped Phenolic Four-Leg Fold-up Shower Seat is fabricated of type 304 stainless steel. All exposed surfaces shall have satin finish. Seat is solid phenolic with white top and bottom surfaces and has black edges. Legs fold up when in retracted position to provide low profile against wall. Rubber cushioned stainless steel leveling feet lock-adjust throughout installation height range and compensate for uneven floors. Unit satisfies ADA Accessibility Guidelines when mounted properly.



American Specialties, Inc.  
441 Saw Mill River Rd, Yonkers, NY 10701  
Tel: 914.476.9000 Fax: 914.476.0688  
E-mail: info@americanspecialties.com  
Web: americanspecialties.com  
© 2019 American Specialties, Inc., an ASI Group Company

**ASI** Group  
Integrated Building Products